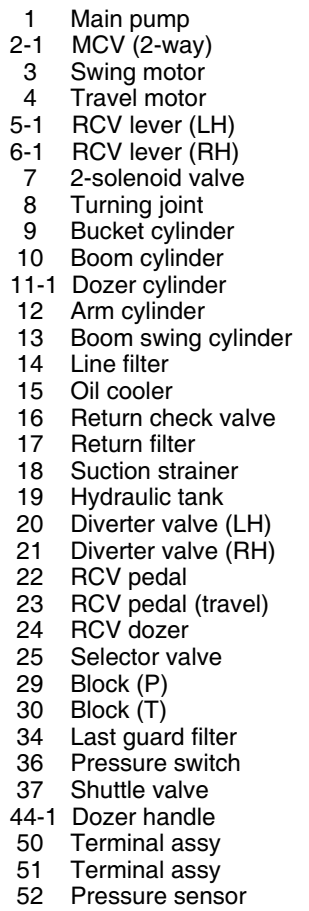


SECTION 3 HYDRAULIC SYSTEM

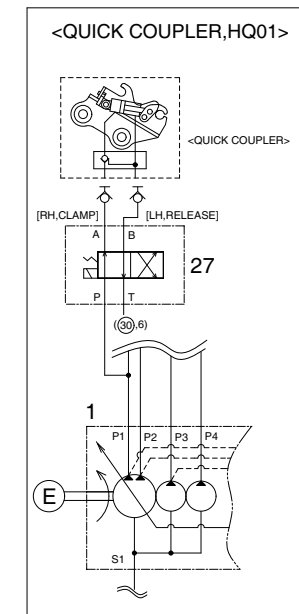
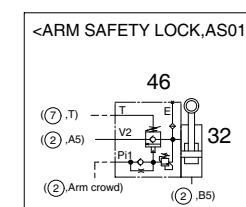
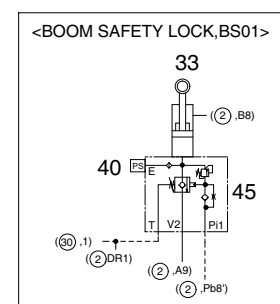
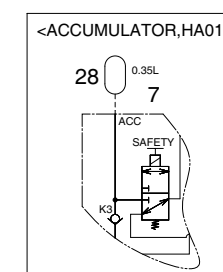
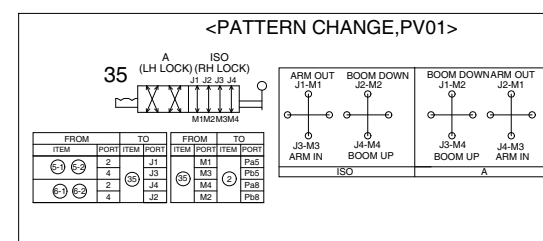
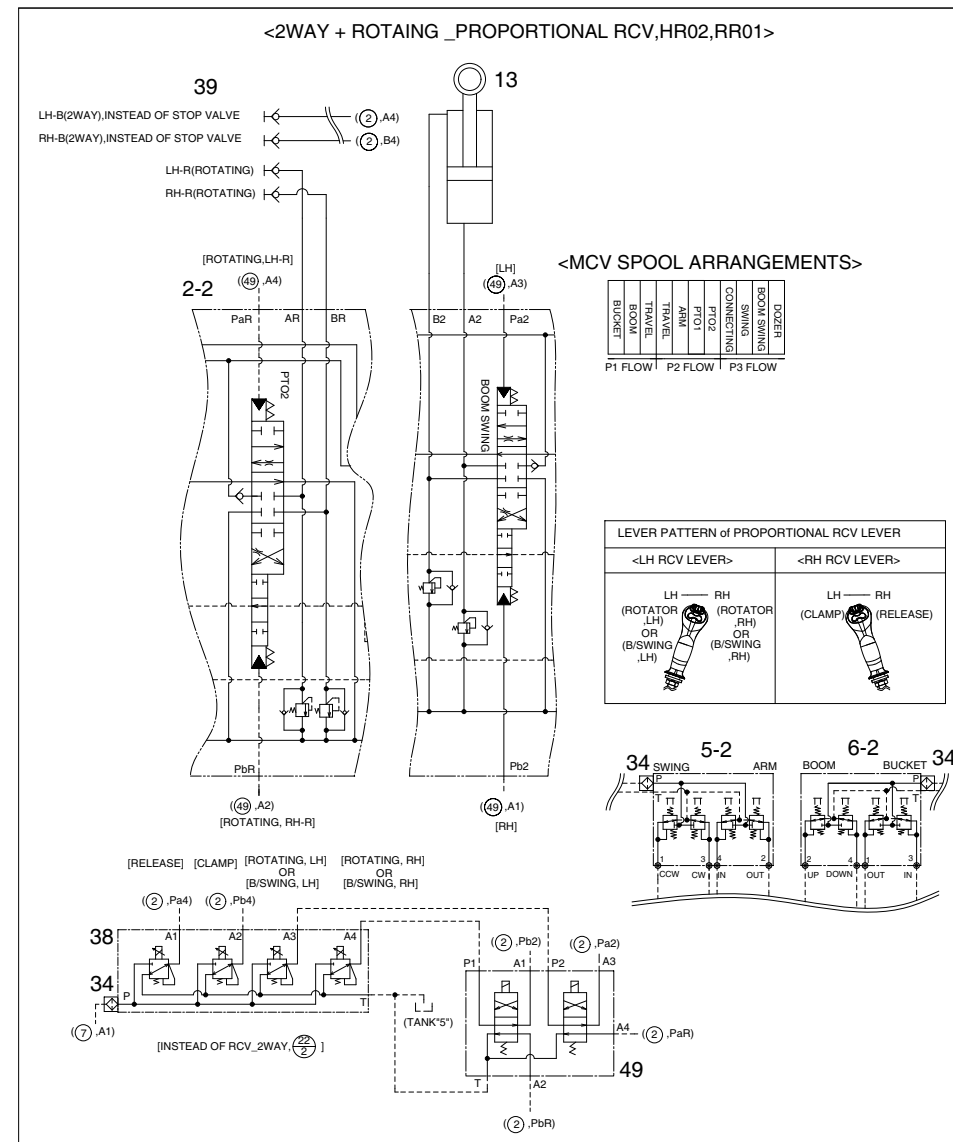
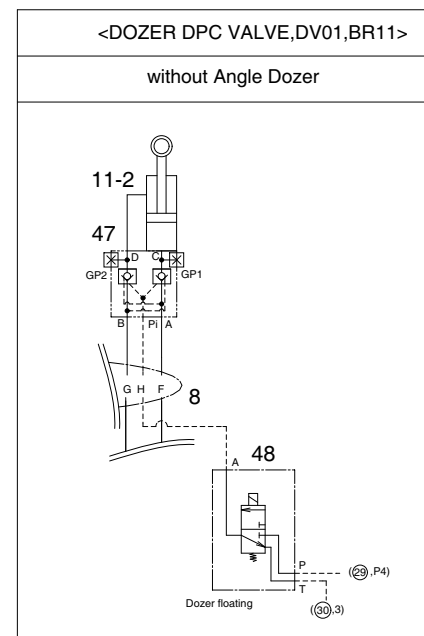
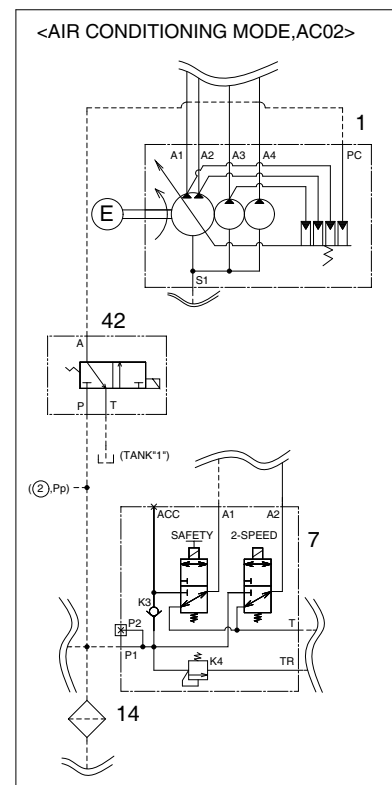
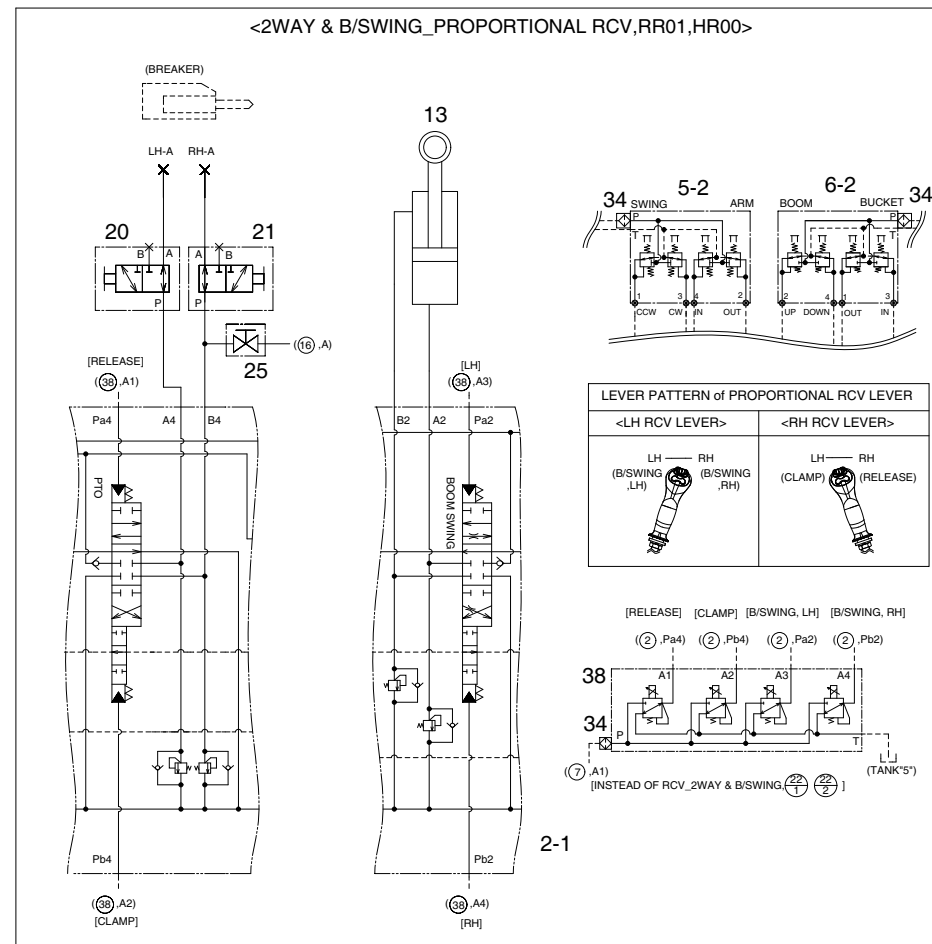
Group 1	Hydraulic Circuit	3-1
Group 2	Main Circuit	3-4
Group 3	Pilot Circuit	3-7
Group 4	Single Operation	3-12
Group 5	Combined Operation	3-24

1. HYDRAULIC CIRCUIT (1/3)



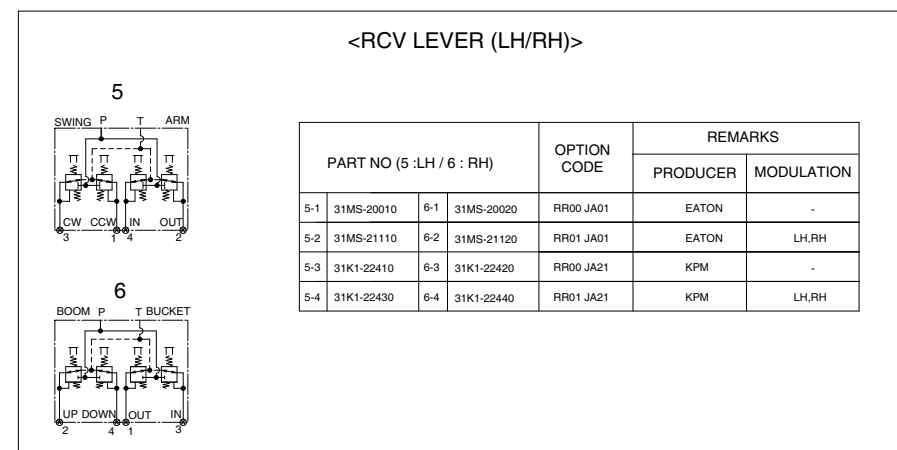
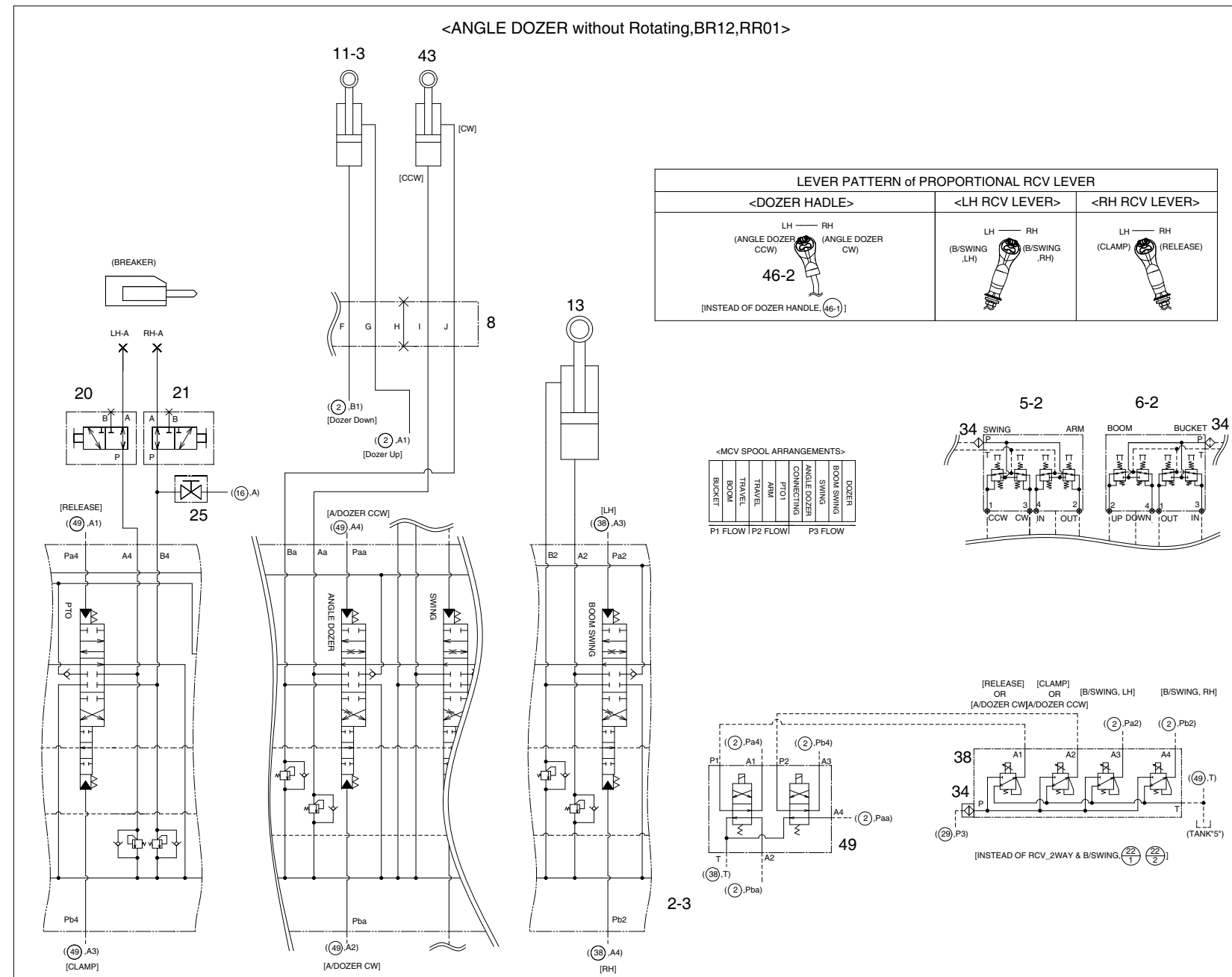
RELIEF VALVE PRESSURE [bar]		
NAME	PRESSURE	REMARK
MRV-P1	235	P1 MAIN
MRV-P2		P2 MAIN
MRV-P3	206	P3 MAIN
K4(Pilot)	40	PILOT
R1	206	SWING
R2		
DRV-A1	255	DOZER HEAD
DRV-A2	255	BOOM SWING
DRV-B2	255	
DRV-A4	255	PTO1
DRV-B4	255	
DRV-A5	255	ARM ROD
DRV-B5	255	ARM HEAD
DRV-B8	255	BOOM ROD
DRV-A9	255	BOOM HEAD
DRV-A10	255	BUCKET ROD
DRV-B10	255	BUCKET HEAD

2. HYDRAULIC CIRCUIT (2/3)



- 2-2 MCV (2-way+rotating)
- 5-2 RCV (proportional, LH)
- 6-2 RCV (proportional, RH)
- 11-2 Dozer cylinder with DPC
- 27 Solenoid valve
- 28 Accumulator
- 32 Arm cylinder with SLV
- 33 Boom cylinder with SLV
- 35 Selector valve
- 38-1 4-EPPR valve
- 38-2 4-EPPR valve
- 39 Male coupling
- 40 Pressure sensor
- 42 Solenoid valve
- 45 Safety lock vavle
- 46 Safety lock vavle
- 47 DPC valve
- 48 Solenoid valve
- 49-1 Solenoid vlave

3. HYDRAULIC CIRCUIT (3/3)



- 2-3 MCV (angle dozer)
- 5-2 RCV (proportional, LH)
- 6-2 RCV (proportional, RH)
- 11-3 Dozer cylinder
- 38-3 4-EPPR valve
- 43 Angle dozer cylinder
- 44-2 Dozer handle
- 49-2 Solenoid valve

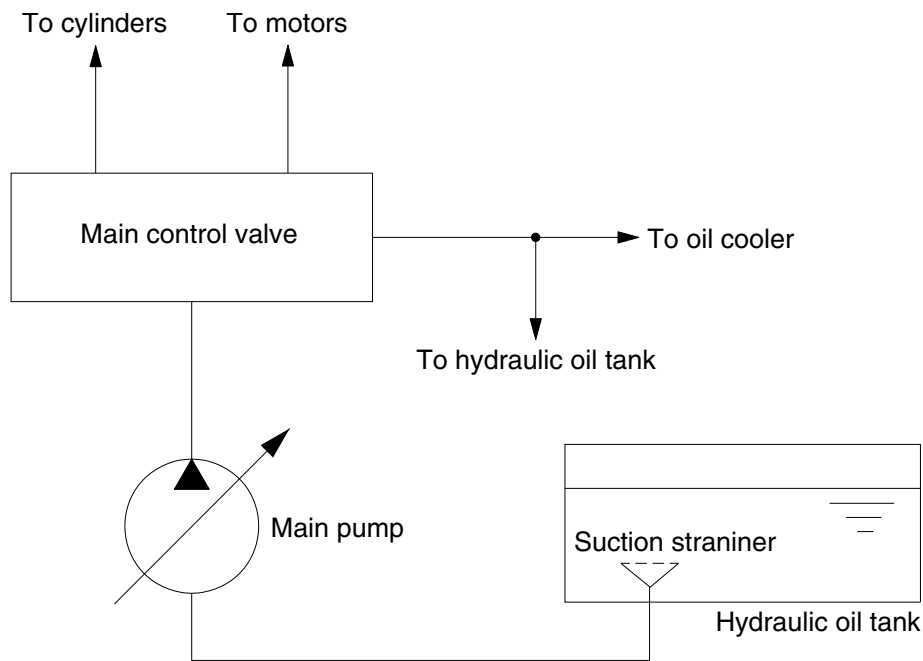
GROUP 2 MAIN CIRCUIT

The main hydraulic circuit consists of suction circuit, delivery circuit, return circuit and drain circuit.

The hydraulic system consists of one main pump, one control valve, one swing motor, four cylinders and two travel motors.

The swash plate type variable displacement axial piston pump is used as the main pump and is driven by the engine at ratio 1.0 of engine speed.

1. SUCTION AND DELIVERY CIRCUIT



140L3CI01

The pumps receive oil from the hydraulic tank through a suction strainer. The discharged oil from the pump flows into the control valve and goes out the tank ports.

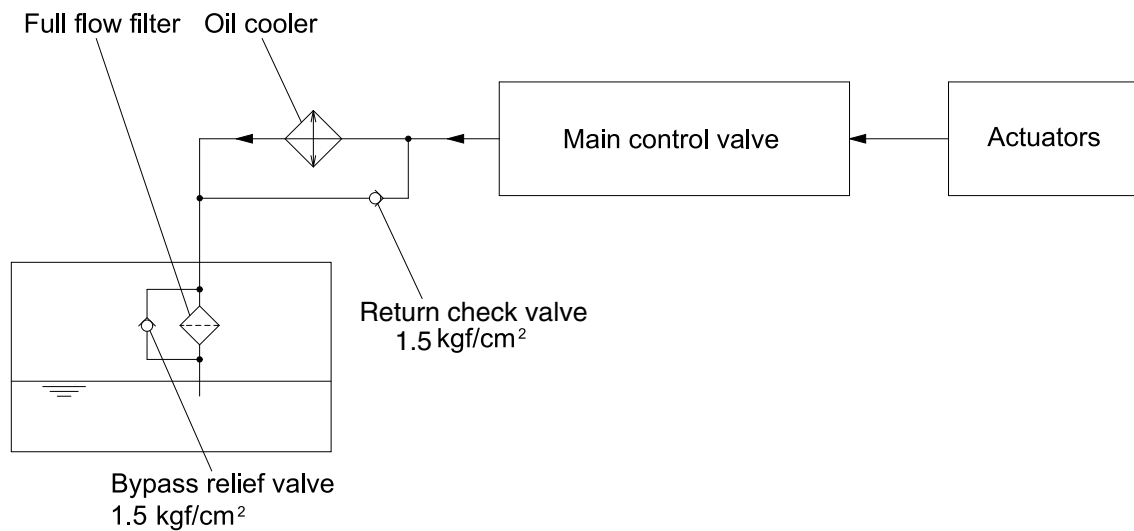
The oil discharged from the main pump flows to the actuators through the main control valve.

The control main valve controls the hydraulic functions.

The return oil from the actuators flows to the hydraulic tank through the main control valve and the oil cooler.

※ The circuit diagram may differ from the equipment, so please check before a repair.

2. RETURN CIRCUIT



35AZ3CI02

All oil returned from each actuator returns to the hydraulic tank through the control valve.

The return check valve is provided in the return circuit.

The setting pressure of return check valve is 1.5 kgf/cm^2 (21 psi). Usually, oil returns to the hydraulic tank from the left side of control valve through oil cooler.

When oil temperature is low, viscosity becomes higher and flow resistance increases when passing through the oil cooler. When the oil pressure exceeds 1.5 kgf/cm^2 (21 psi), the oil returns directly to the hydraulic tank, resulting in the oil temperature being raised quickly at an appropriate level.

When the oil cooler is clogged, the oil returns directly to the hydraulic tank through return check valve.

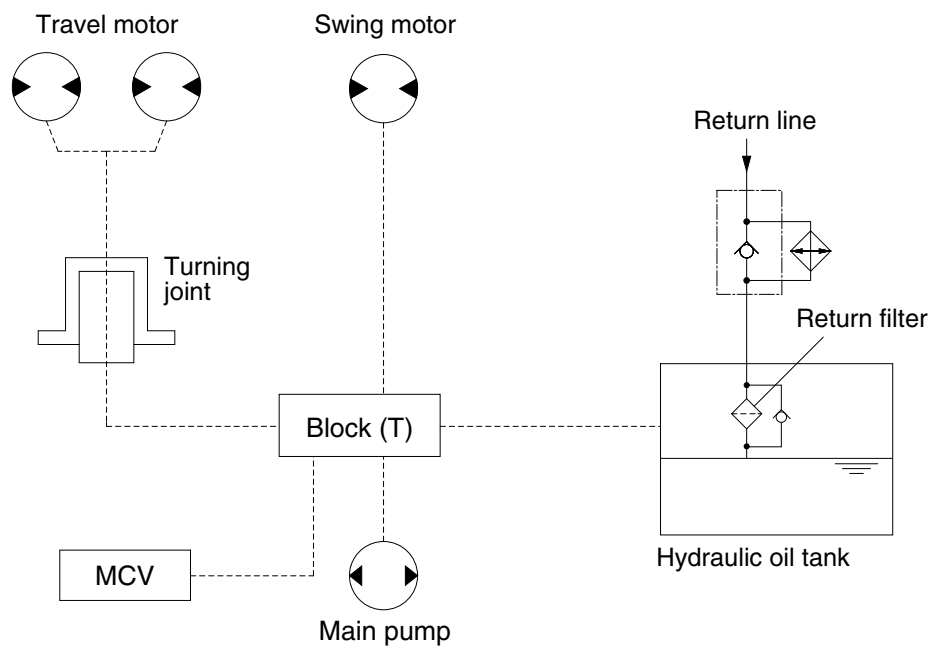
The full-flow filter and bypass relief valve are provided in the hydraulic tank.

The oil returned from the main control valve is filtered by the full-flow filter. A bypass relief valve is provided in the full-flow filter.

When the filter element is clogged, the bypass relief valve opens at 1.5 kgf/cm^2 (21 psi) differential pressure.

※ The circuit diagram may differ from the equipment, so please check before a repair.

3. DRAIN CIRCUIT



35AZ3CI03

Besides internal leaks from the motors and main pump, the oil for lubrication circulates.

1) TRAVEL MOTOR DRAIN CIRCUIT

Oil leaked from the right and left travel motors comes out of the drain ports provided in the respective motor casing and join with each other. These oils pass through the turning joint and return to the hydraulic tank through the block (T).

2) SWING MOTOR DRAIN CIRCUIT

Oil leaked from the swing motor returns to the hydraulic tank passing through the block (T).

3) MAIN CONTROL VALVE

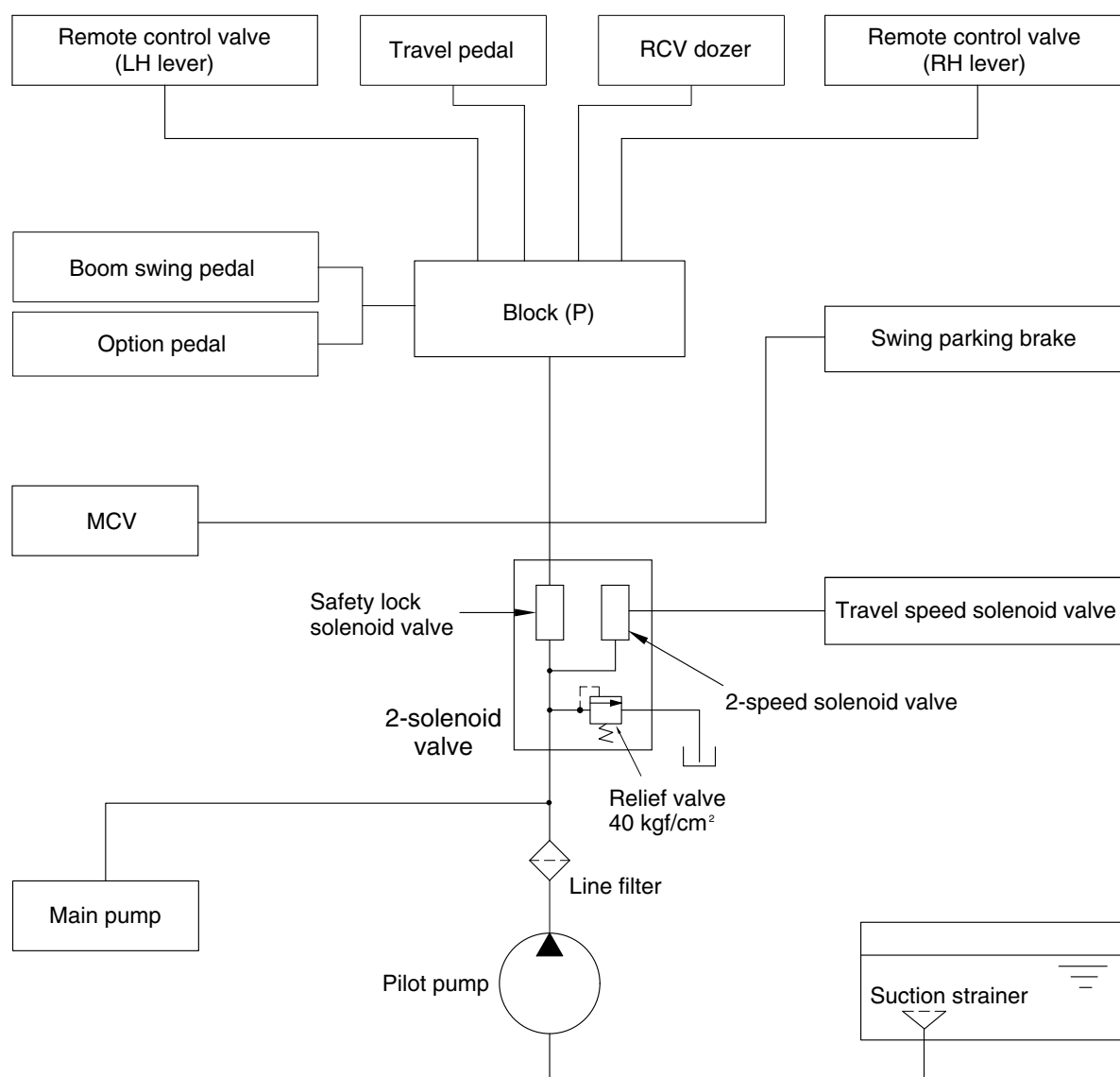
Oil leaked from the main control valve returns to the hydraulic tank passing through the block (T).

4) MAIN PUMP

Oil leaked from the main pump returns to the hydraulic tank passing through the block (T).

※ The circuit diagram may differ from the equipment, so please check before a repair.

GROUP 3 PILOT CIRCUIT



35AZ3C104

The pilot circuit consists of suction circuit, delivery circuit and return circuit.

The pilot pump receives the oil from the hydraulic tank through the suction strainer.

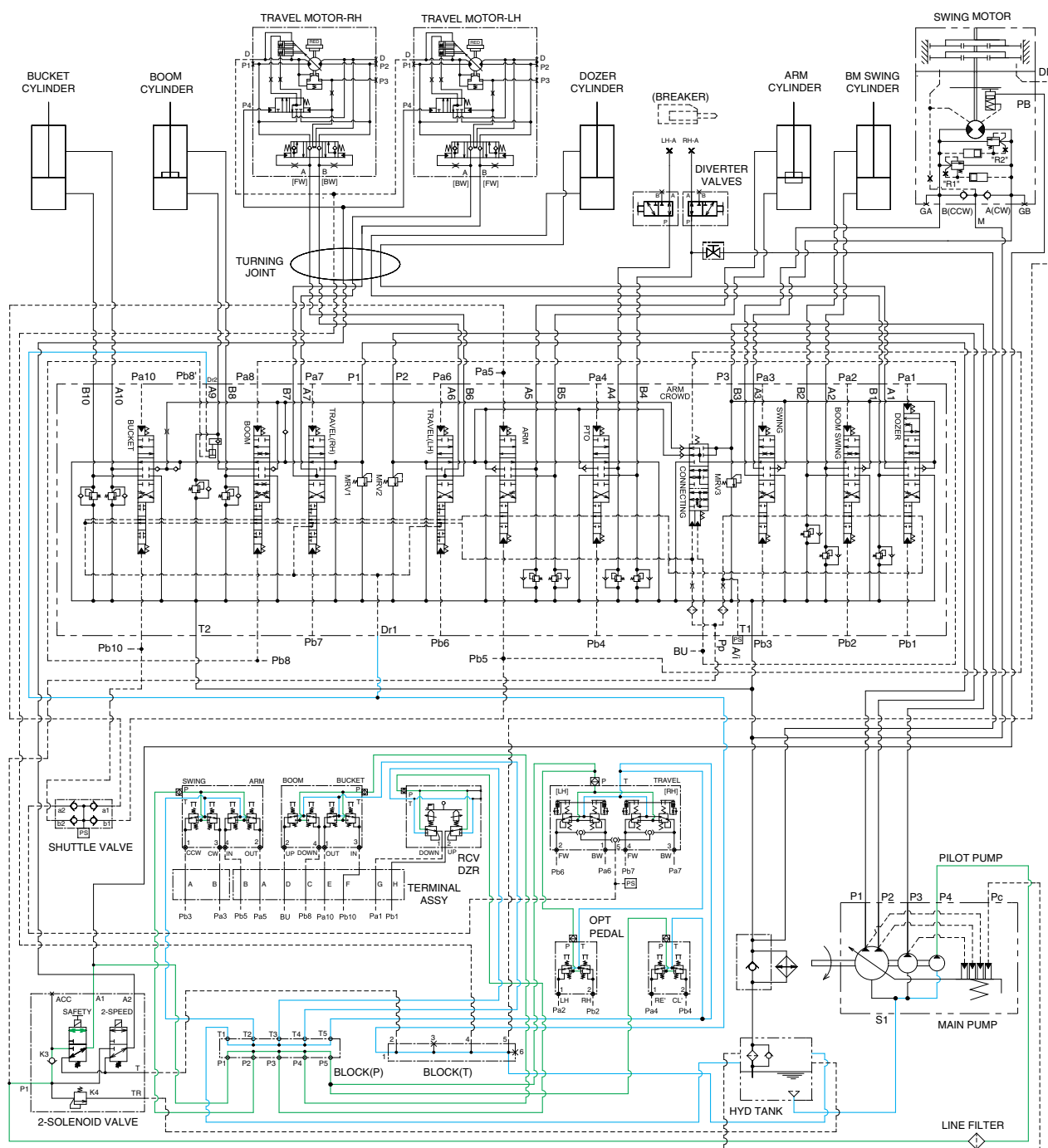
The discharged oil from the pilot pump flows to the 2-solenoid valve and provides oil to each control valve as below.

- RCV lever (LH & RH), RCV dozer, travel pedal, boom swing pedal and option pedal through the safety lock solenoid valve and block (P).
- Swing parking brake through the safety lock solenoid valve.
- Travel speed solenoid valve through the 2-speed solenoid valve and turning joint.

Also, the oil from the pilot pump flows to the pilot pressure port of the main control valve and functions as auto idle signal pressure.

※ The circuit diagram may differ from the equipment, so please check before a repair.

1. SUCTION, DELIVERY AND RETURN CIRCUIT



35AZ3HC03

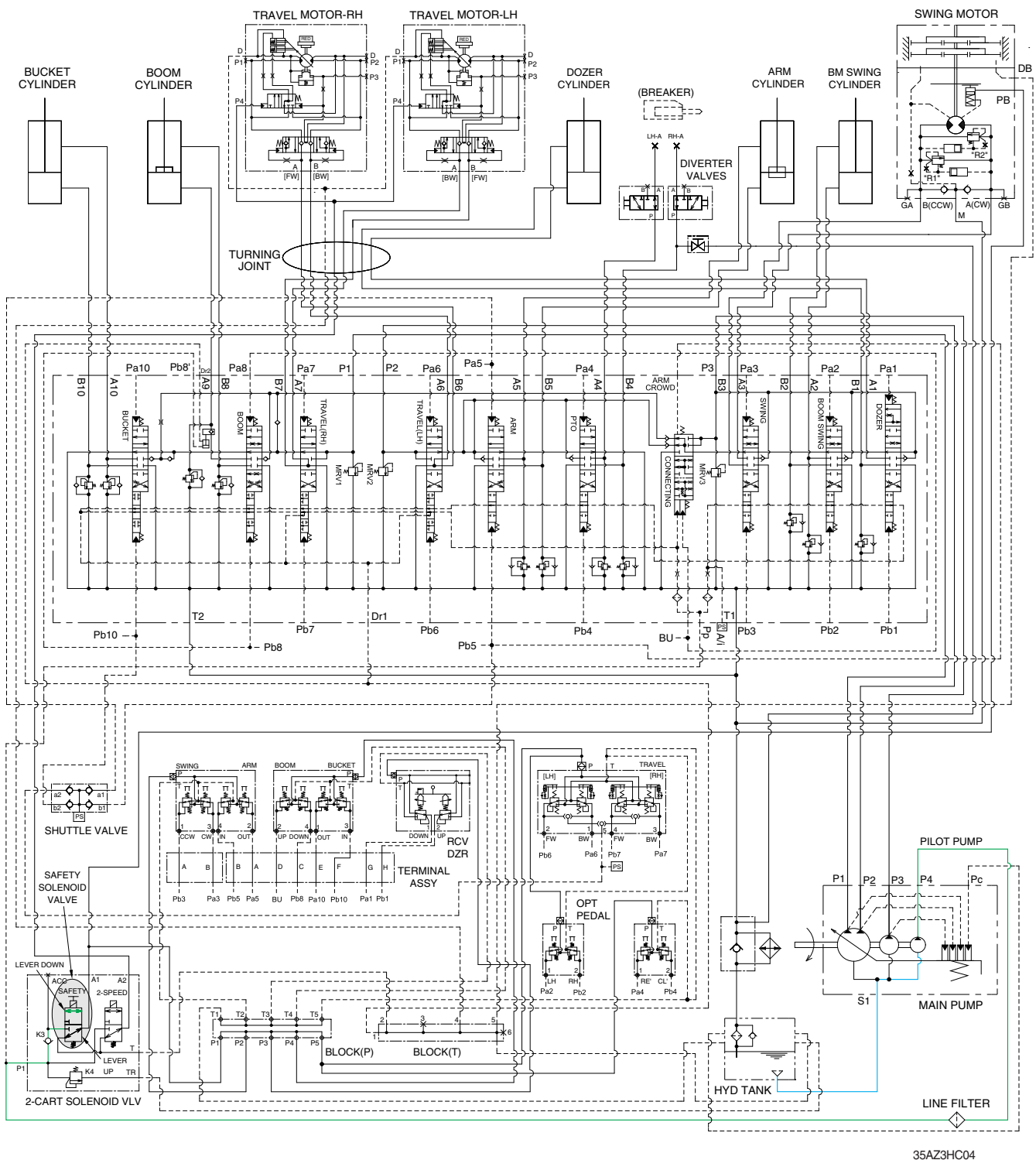
The pilot pump receive oil from the hydraulic tank. The discharged oil from the pilot pump flows to the safety solenoid valve through the line filter. The oil is filtered by the line filter. The pilot relief valve is provided in the 2-solenoid valve for limiting the pilot circuit pressure.

The oil filtered by line filter flows remote control valve, MCV and swing port through safety solenoid valve.

The return oil flow from remote control valve is returned to the hydraulic tank.

※ The circuit diagram may differ from the equipment, so please check before a repair.

2. SAFETY VALVE (SAFETY LEVER)



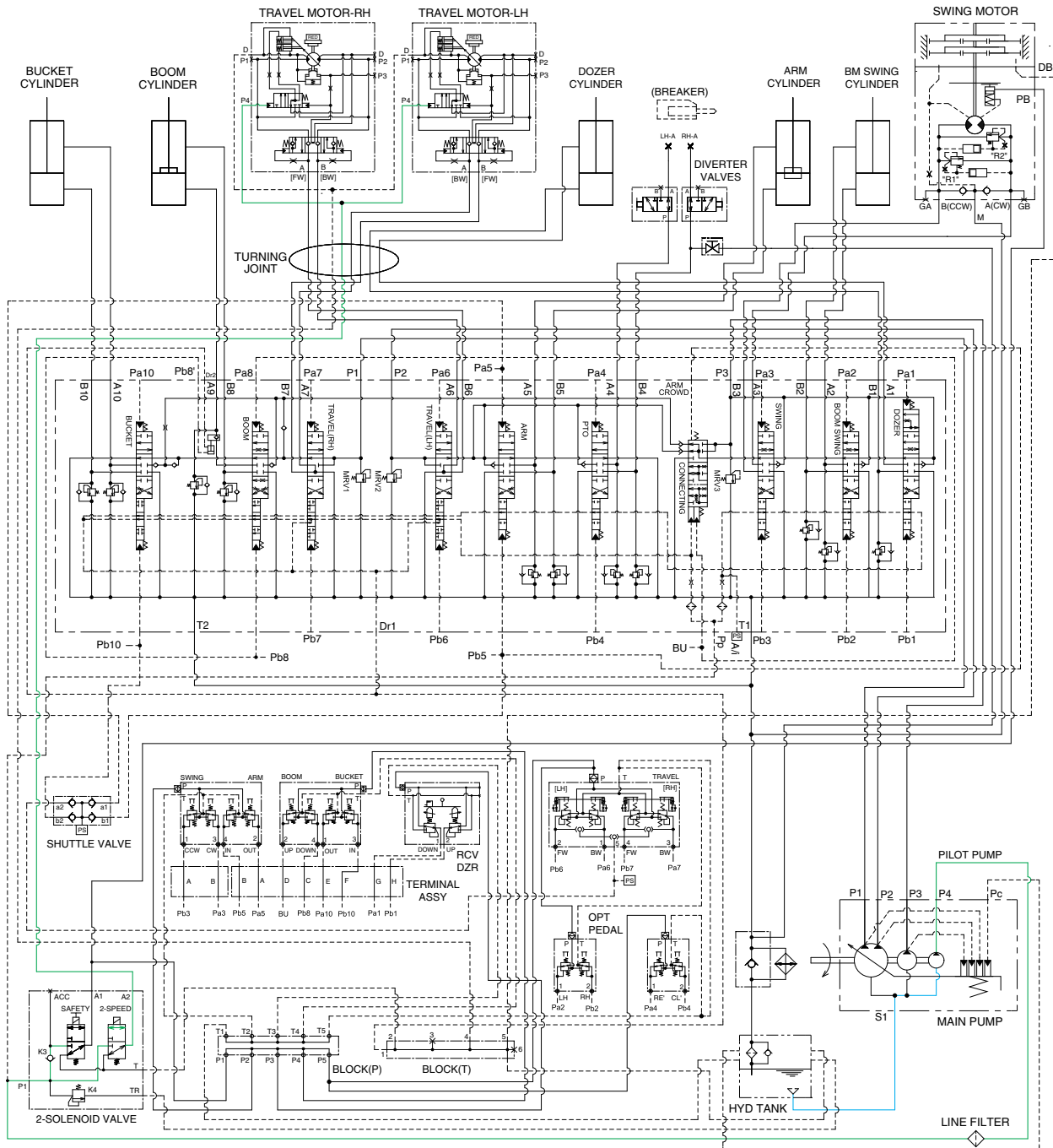
35AZ3HC04

When the lever of the safety solenoid valve is moved downward, oil flows into the remote control valve through solenoid valve and line filter.

When the lever of the safety solenoid valve is moved upward, oil does not flow into the remote control valve, because of the blocked port.

※ The circuit diagram may differ from the equipment, so please check before a repair.

3. TRAVEL SPEED CONTROL SYSTEM



35AZ3HC05

When the travel speed switch is pushed, the travel speed solenoid valve is actuated and the discharged oil from the pilot pump flows to the **P4** port of pilot valve in the travel motors.

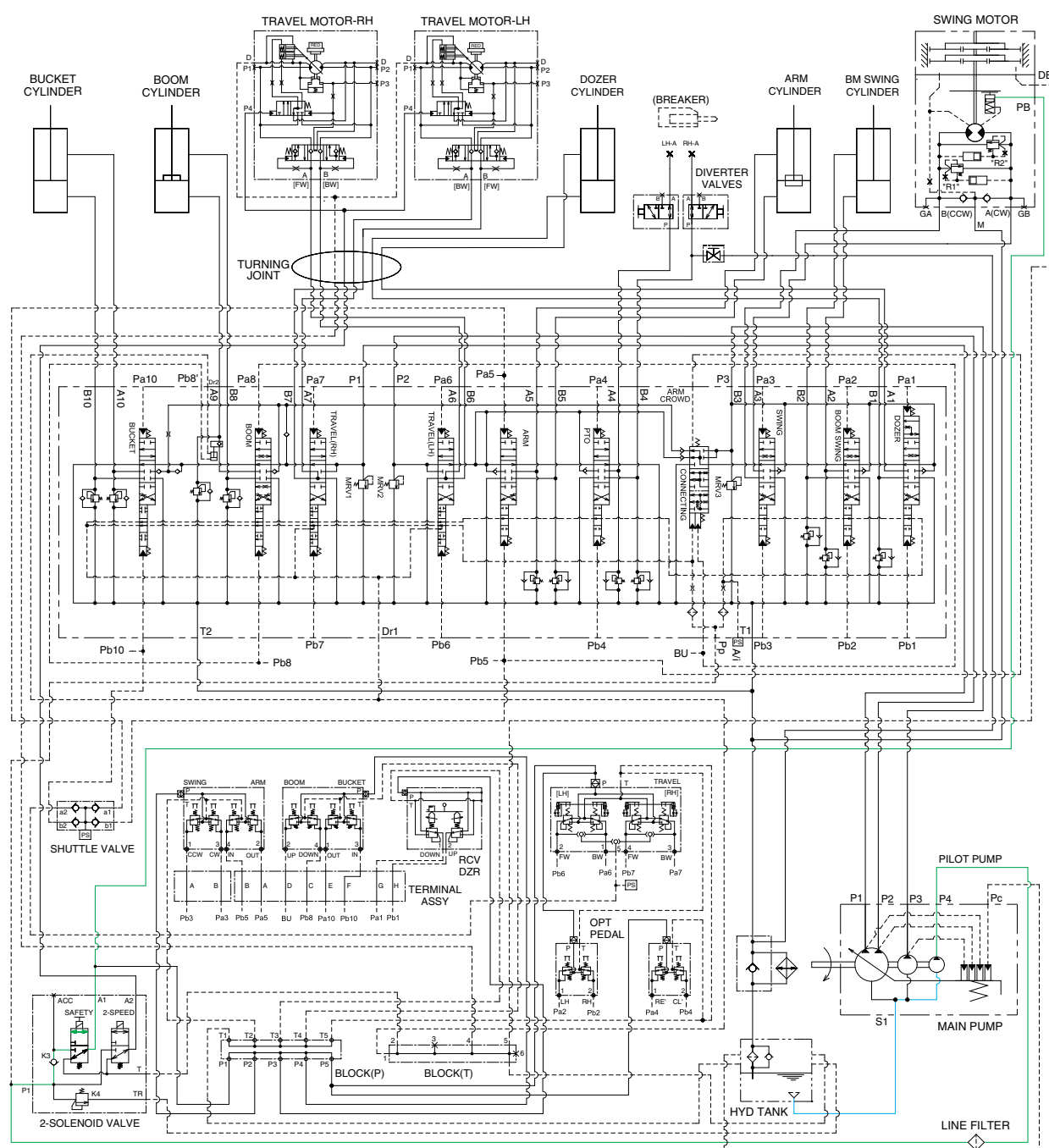
As a result, the control piston is pushed by the main oil flow, thus the displacement is minimized.

When the travel speed switch is pushed once more, the travel speed solenoid valve is return to original position by the force of spring, the hydraulic oil of **P4** port returns to the hydraulic tank.

As a result, the control piston is returned by the main oil flow, thus the displacement is maximized.

※ The circuit diagram may differ from the equipment, so please check before a repair.

4. SWING PARKING BRAKE RELEASE



35AZ3HC06

When the safety solenoid lever is moved downward, the pilot oil flow into **PB** port of the swing motor through solenoid valve. This pressure is applied to swing motor disc, thus the brake is released.
When the safety solenoid lever is moved to upward, oil in the swing motor disc cylinder is drained, thus the brake is applied.

※ The circuit diagram may differ from the equipment, so please check before a repair.

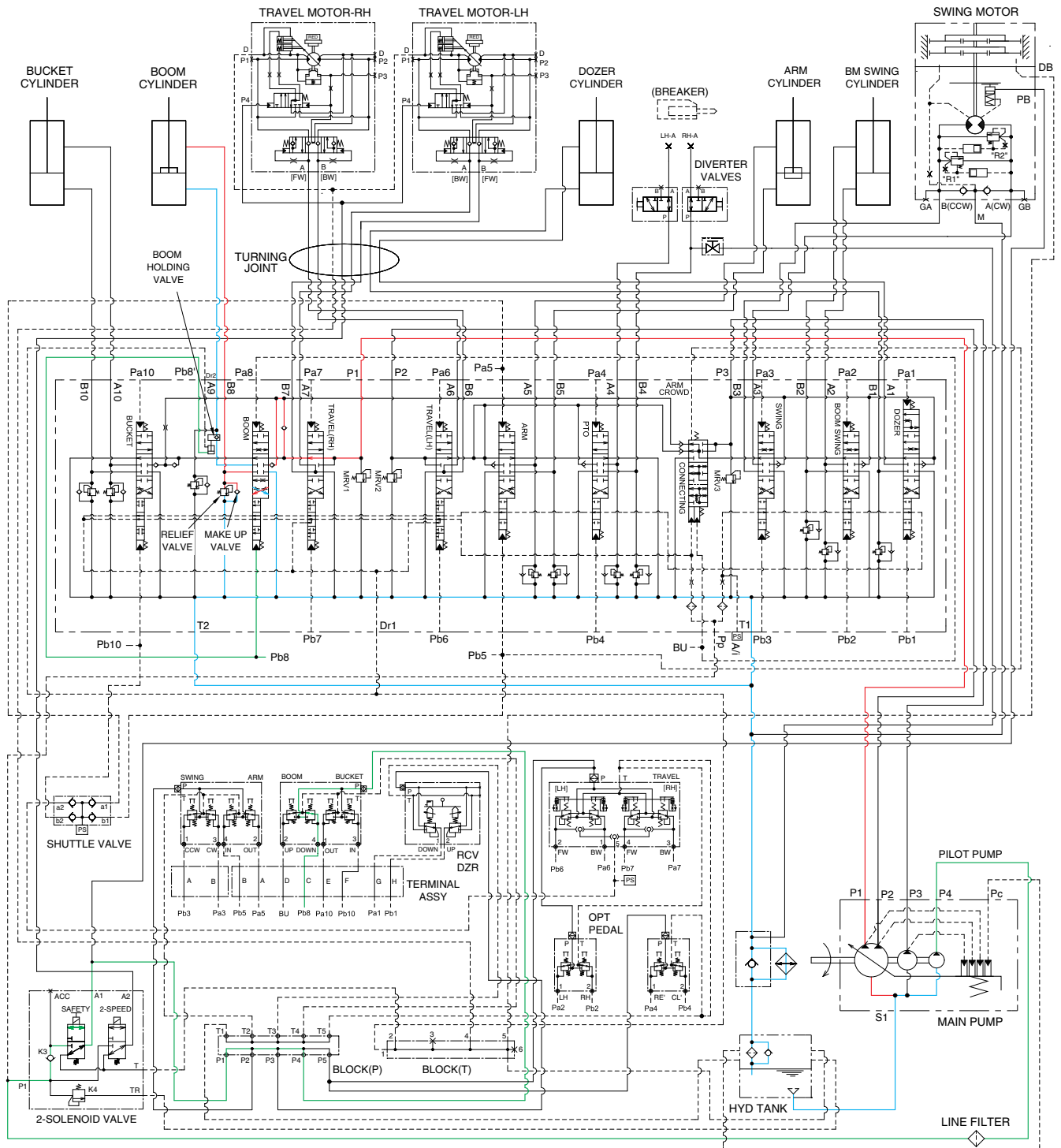
1. BOOM UP OPERATION



The oil from the P1 and P3 pump flows into the main control valve and then goes to the large chamber of boom cylinders. At the same time, the oil from the small chamber of boom cylinders returns to the hydraulic oil tank through the boom spool in the main control valve. When this happens, the boom goes up. The excessive pressure in the boom cylinder bottom end circuit is prevented by relief valve. When the boom is up and the control lever is returned to neutral position, the circuit for the holding pressure at the bottom end of the boom cylinder is closed by the boom holding valve. This prevents the hydraulic drift of boom cylinder.

3-12

2. BOOM DOWN OPERATION



35AZ3HC11

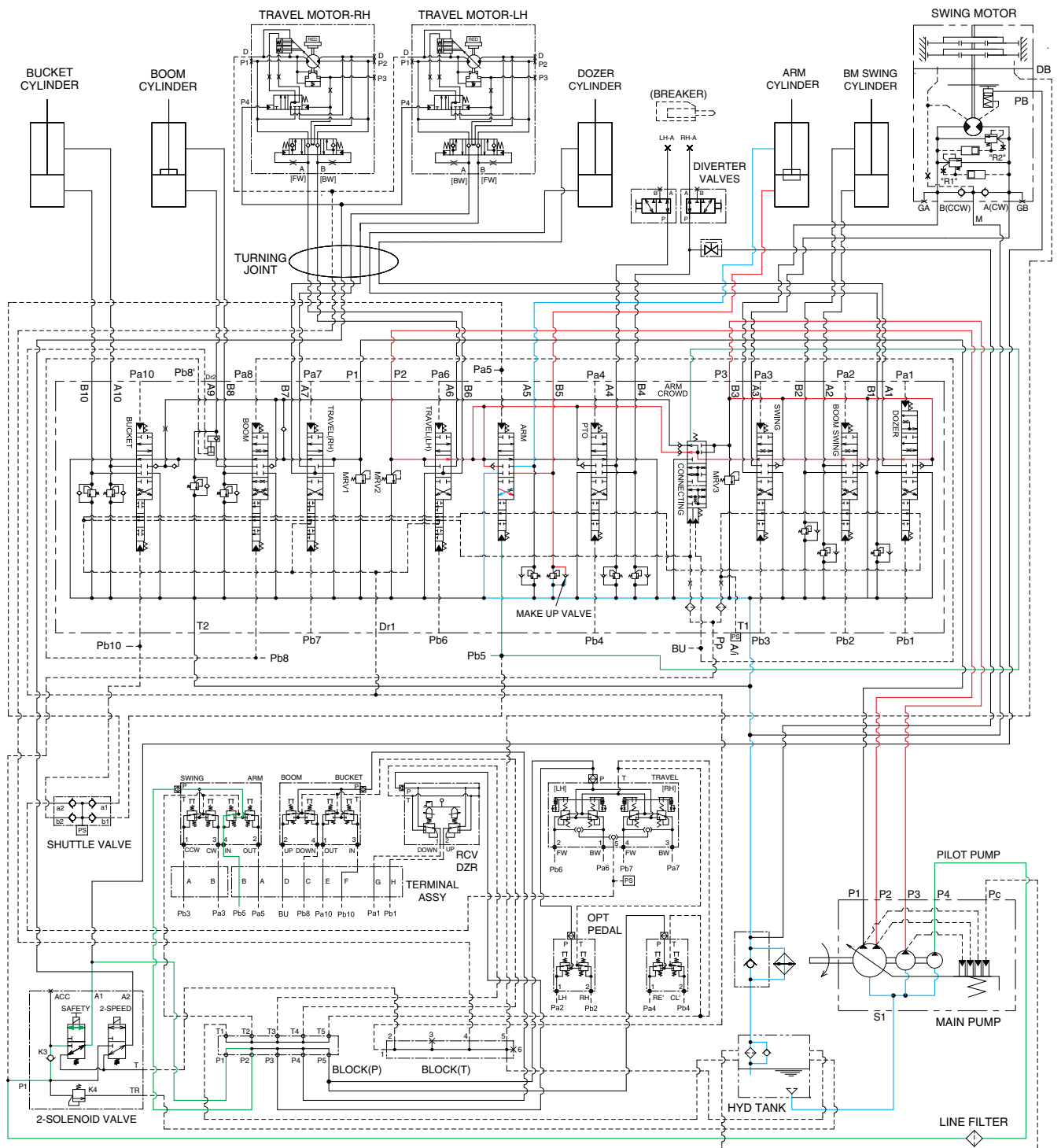
When the right control lever is pushed forward, the boom spools in the main control valve are moved to the down position by the pilot oil pressure (Pb8) from the remote control valve. Since **Pb8** port is connected **Pb8'** port through the piping, boom holding valve is also released.

The oil from the P1 pump flows into the main control valve and then goes to the small chamber of boom cylinders. At the same time, the oil from the large chamber of boom cylinders returns to the hydraulic tank through the boom spool in the main control valve.

The excessive pressure in the boom cylinder rod end circuit is prevented by the relief valve.

※ The circuit diagram may differ from the equipment, so please check before a repair.

3. ARM ROLL IN OPERATION



35AZ3HC12

When the left control lever is pulled back, the arm spools in the main control valve are moved to the roll in position by the pilot oil pressure (Pb5) from the remote control valve.

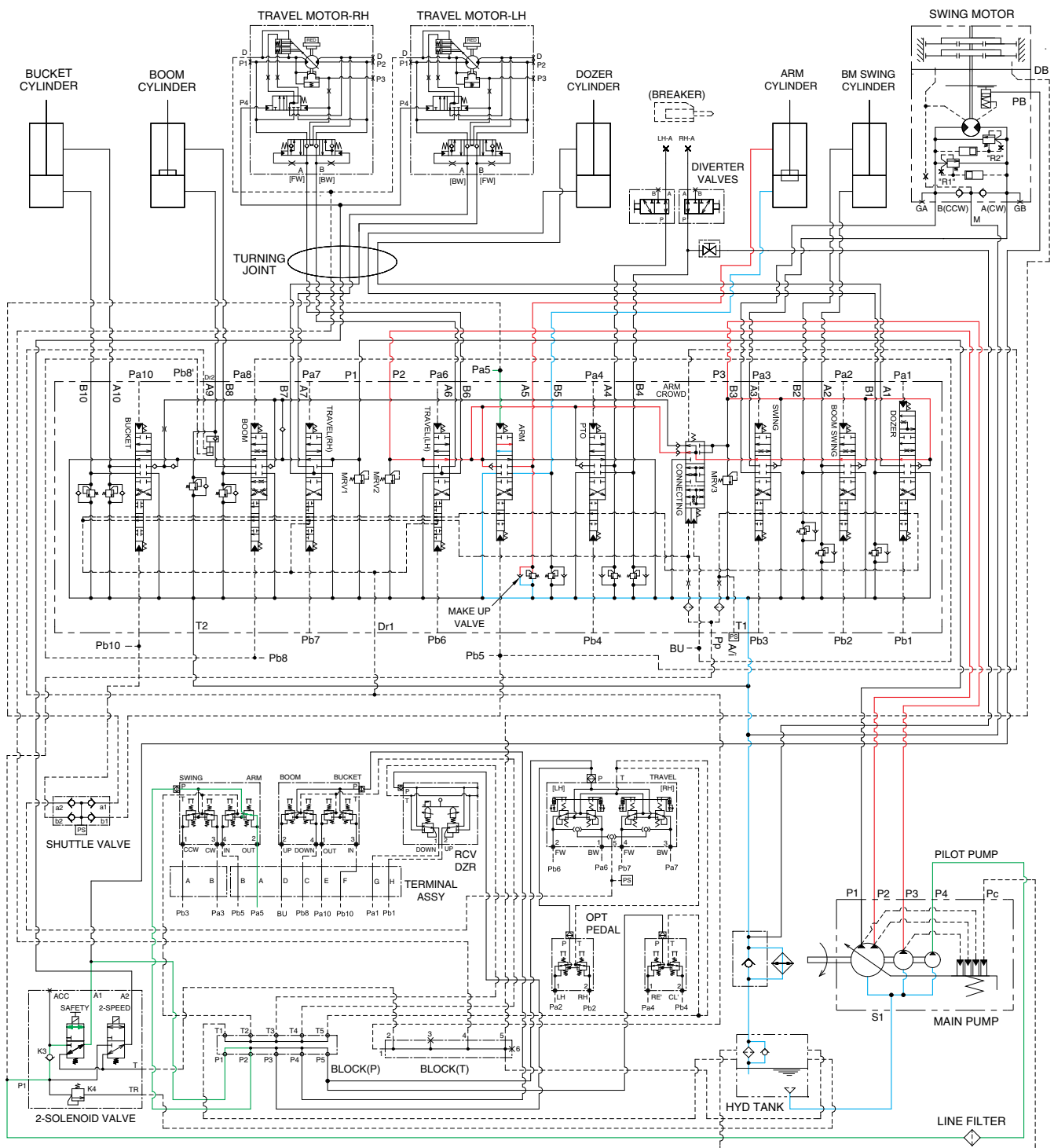
The oil from the P2 and P3 pump flows into the main control valve and then goes to the large chamber of arm cylinder.

At the same time, the oil from small chamber of arm cylinder returns to the hydraulic oil tank through the arm spool in the main control valve. When this happens, the arm rolls in.

The cavitation which will happen to the bottom of the arm cylinder is also prevented by the make-up valve in the main control valve.

※ The circuit diagram may differ from the equipment, so please check before a repair.

4. ARM ROLL OUT OPERATION



35AZ3HC13

When the left control lever is pushed forward, the arm spool in the main control valve are moved to the roll out position by the pilot oil pressure (Pa5) from the remote control valve.

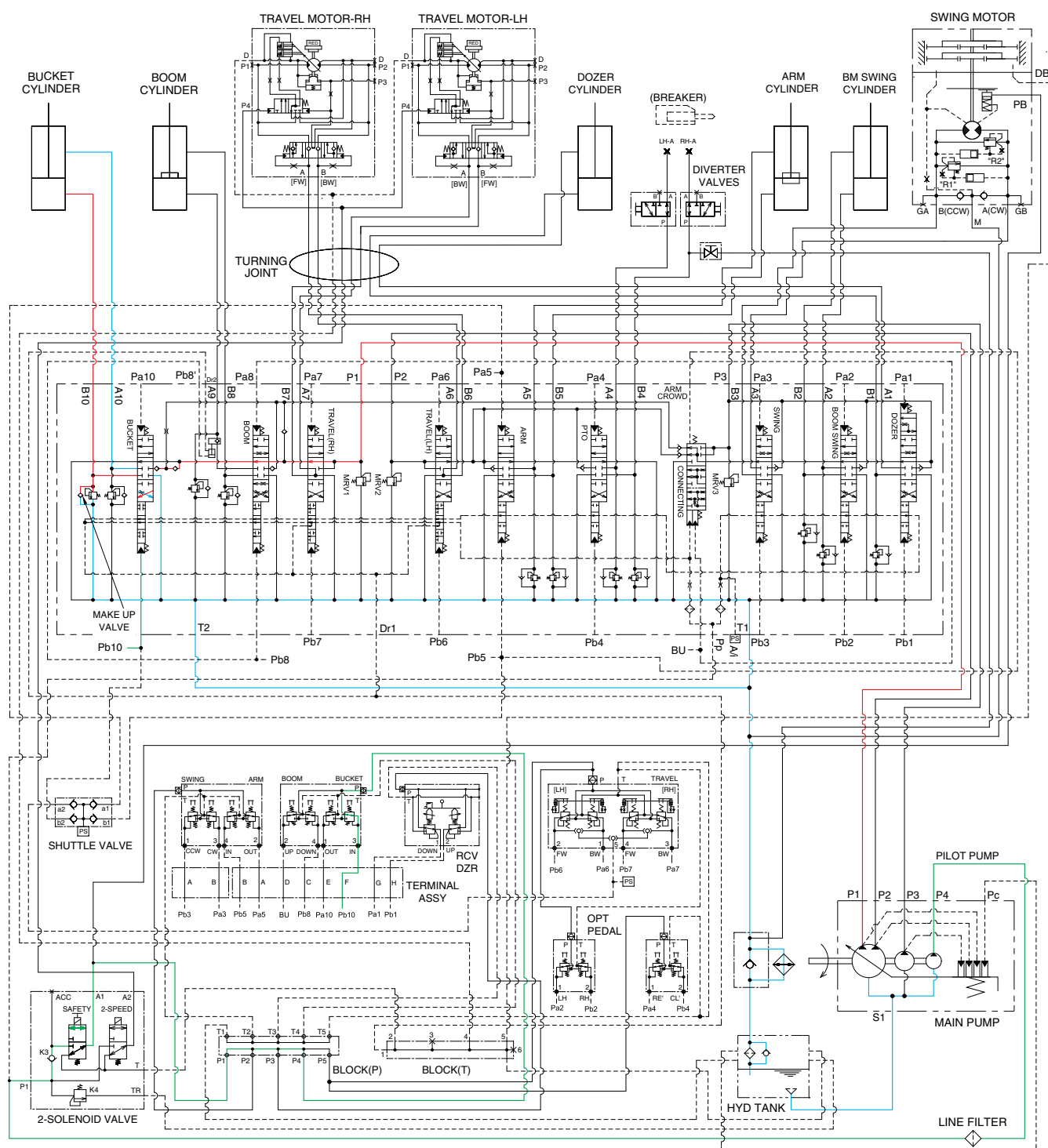
The oil from the P2 and P3 pump flows into the main control valve and then goes to the small chamber of arm cylinder.

At the same time, the oil from the large chamber of arm cylinder returns to the hydraulic oil tank through the arm spool in the main control valve. When this happens, the arm rolls out.

The cavitation which will happen to the rod of the arm cylinder is also prevented by the make-up valve in the main control valve.

※ The circuit diagram may differ from the equipment, so please check before a repair.

5. BUCKET ROLL IN OPERATION



35AZ3HC14

When the right control lever is pulled left, the bucket spool in the main control valve is moved to the roll in position by the pilot oil pressure (Pb10) from the remote control valve.

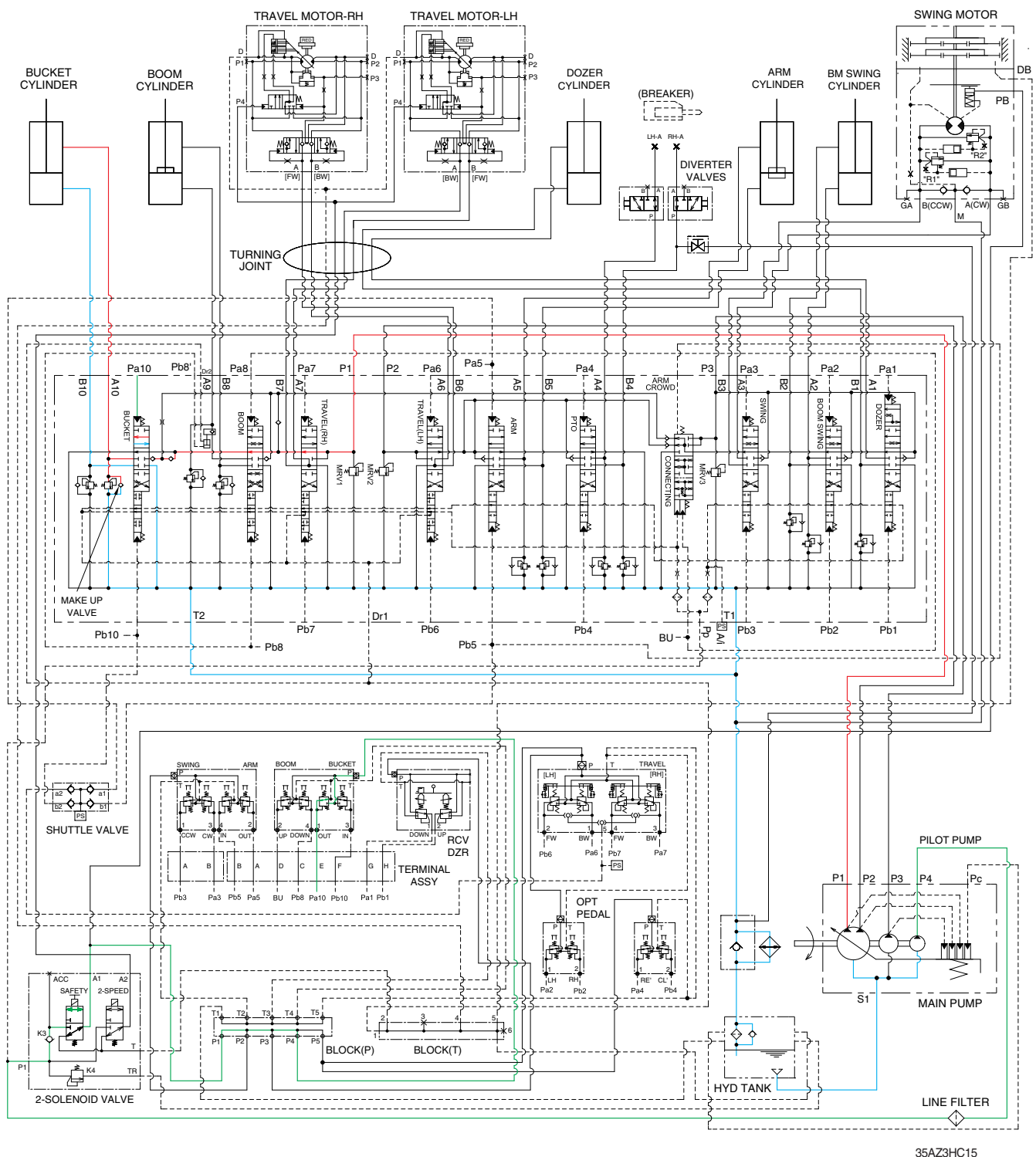
The oil from the P1 pump flows into the main control valve and then goes to the large chamber of bucket cylinder.

At the same time, the oil from the small chamber of bucket cylinder returns to the hydraulic oil tank through the boom spool in the main control valve. When this happens, the bucket rolls in.

The cavitation which will happen to the bottom of the bucket cylinder is also prevented by the make-up valve in the main control valve.

※ The circuit diagram may differ from the equipment, so please check before a repair.

6. BUCKET ROLL OUT OPERATION



35AZ3HC15

When the right control lever is pushed right, the bucket spool in the main control valve is moved to the roll out position by the pilot oil pressure (Pa10) from the remote control valve.

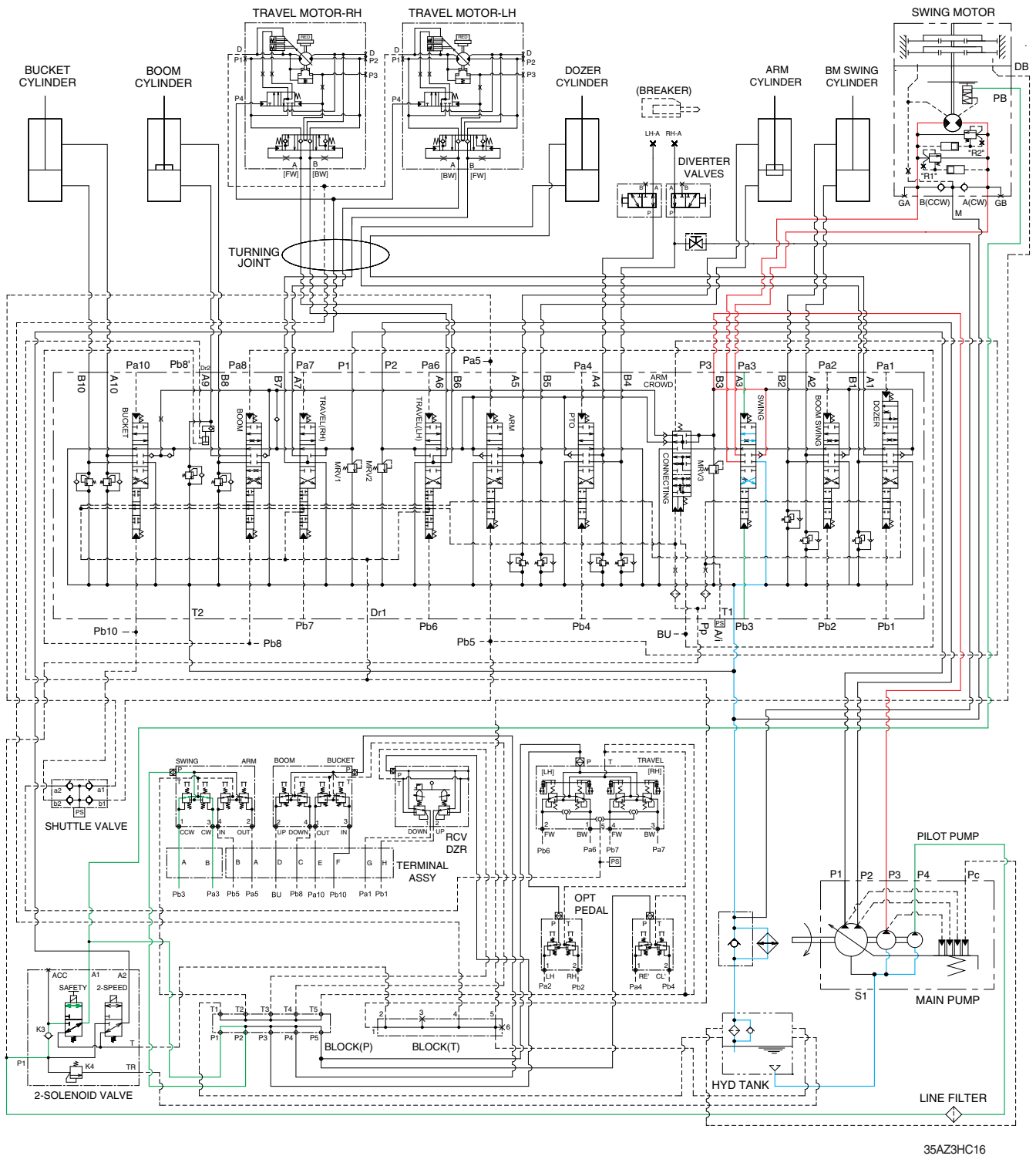
The oil from the P1 pump flows into the main control valve and then goes to the small chamber of bucket cylinder.

At the same time, the oil from the large chamber of bucket cylinder returns to the hydraulic oil tank through the bucket spool in the main control valve. When this happens, the bucket rolls out.

The cavitation which will happen to the rod of the bucket cylinder is also prevented by the make-up valve in the main control valve.

※ The circuit diagram may differ from the equipment, so please check before a repair.

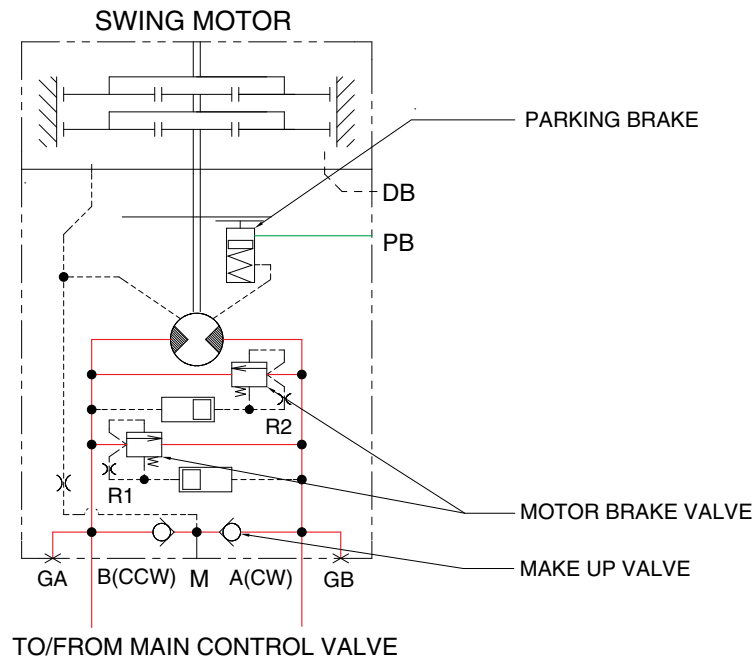
7. SWING OPERATION



When the left control lever is pushed left or right, the swing spool in the main control valve is moved to the left or right swing position by the pilot oil pressure (Pa3, Pb3) from the remote control valve. The oil from the P3 pump flows into the main control valve and then goes to the swing motor. At the same time, the return oil from the swing motor returns to the hydraulic oil tank through the swing spool in the main control valve. When this happens, the superstructure swings to the left or right. The swing parking brake, make up valve and the overload relief valve are provided in the swing motor. The cavitation which will happen to the swing motor is also prevented by the make up valve in the swing motor itself.

※ The circuit diagram may differ from the equipment, so please check before a repair.

SWING CIRCUIT OPERATION



35AZ3HC17

1) MOTOR BRAKE VALVE

Motor brake valve for the swing motor limits to cushion the starting and stopping pressure of swing operation.

2) MAKE UP VALVE

The make up valves prevent cavitation by supplying return oil to the vacuum side of the motor.

3) PARKING BRAKE

PARKING BRAKE "ON" OPERATION

When the safety solenoid lever is moved to upward, the oil in the parking brake is drained to the tank. So, parking brake is applied.

PARKING BRAKE "OFF" OPERATION

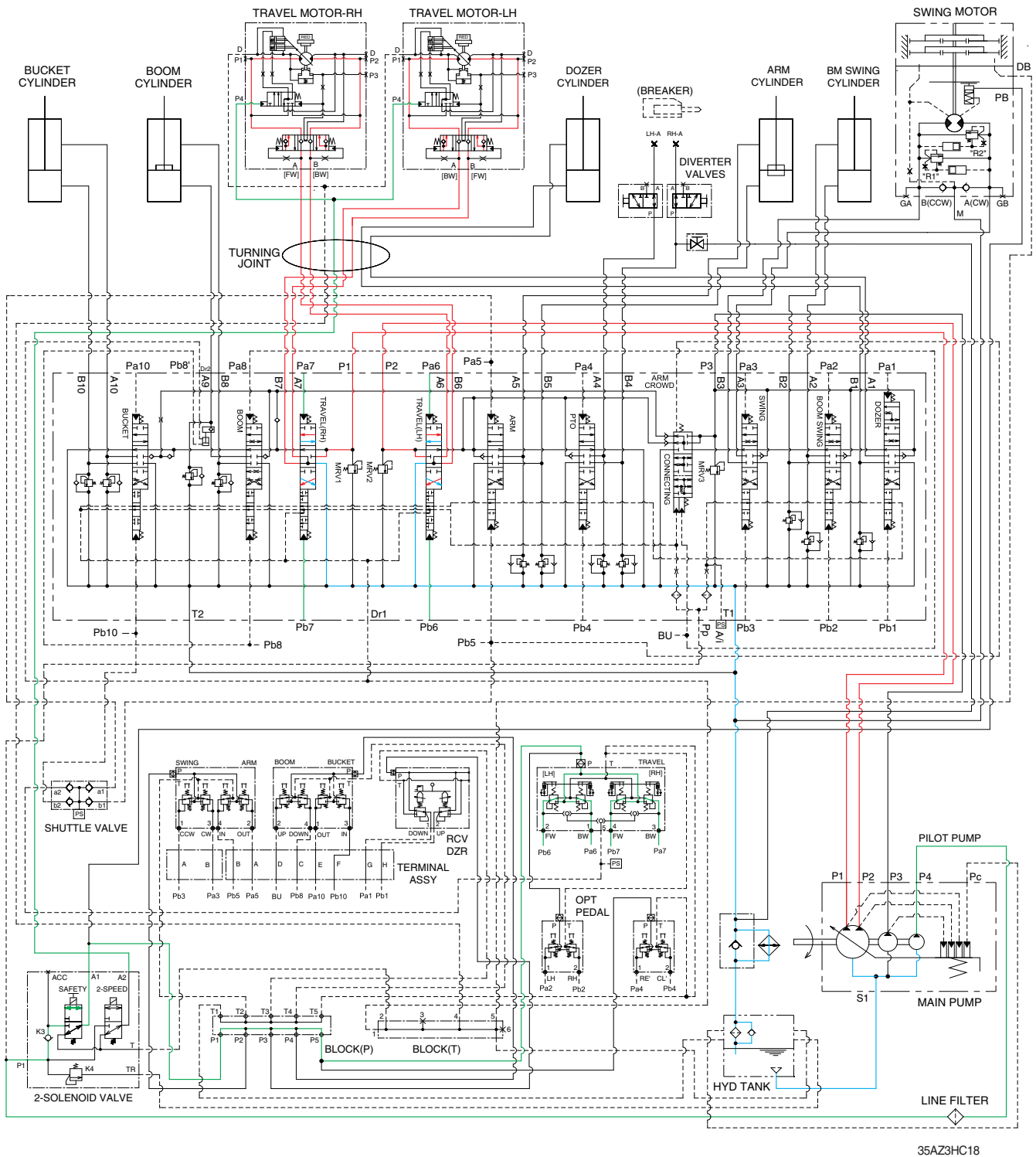
The parking brake is released by the pilot pressure oil from pilot pump.

When the safety solenoid lever is moved to downward, the pilot pressure from the P4 pilot pump is flow into parking brake through safety solenoid valve.

Then the pilot pressure lift the brake piston and release the parking brake.

※ The circuit diagram may differ from the equipment, so please check before a repair.

8. TRAVEL FORWARD AND REVERSE OPERATION

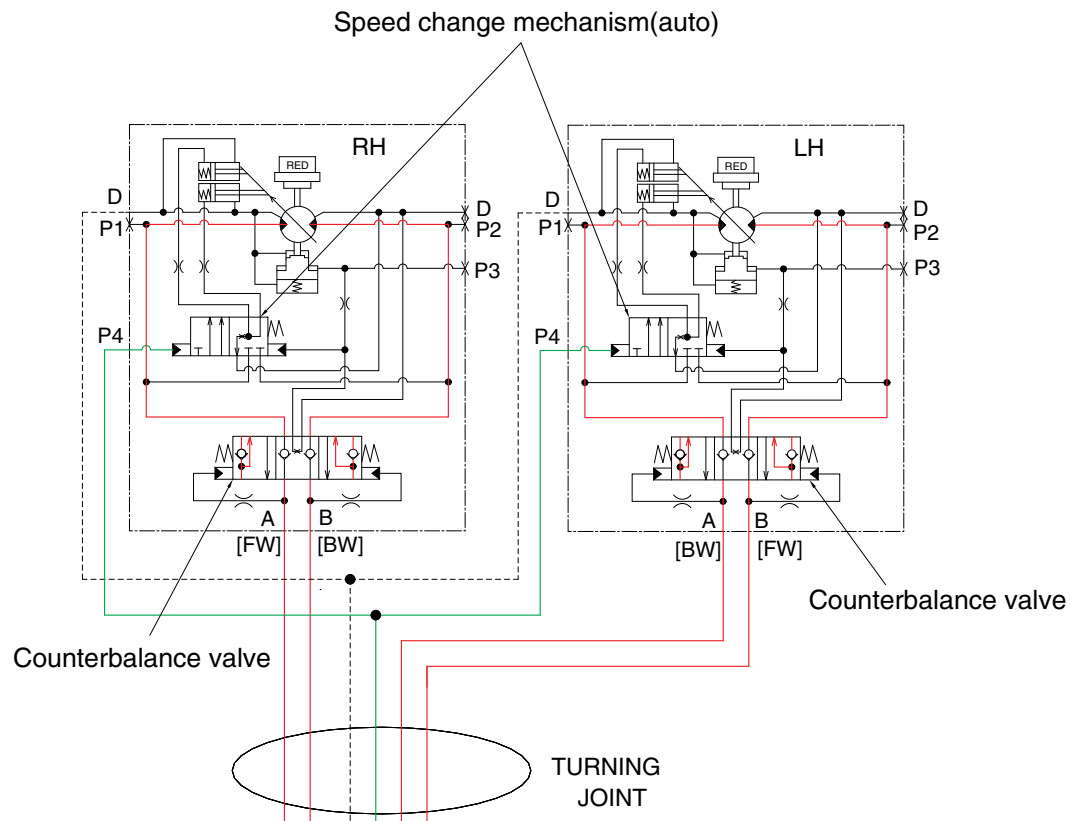


35AZ3HC18

When the travel levers are pushed forward or reverse position, the travel spools in the main control valve are moved to the forward or reverse travel position by pilot pressure oil (Pb6, Pb7, Pa6, Pa7) from the travel pedal. The oil from the both pumps flows into the main control valve and then goes to the both travel motors through the turning joint. The return oil from both travel motors returns to the hydraulic oil tank through the turning joint and the travel spools in the main control valve. When this happens, the machine moves to the forward or reverse.

※ The circuit diagram may differ from the equipment, so please check before a repair.

TRAVEL CIRCUIT OPERATION



35AZ3HC19

Valves are provided on travel motors to offer the following functions.

1) COUNTERBALANCE VALVE

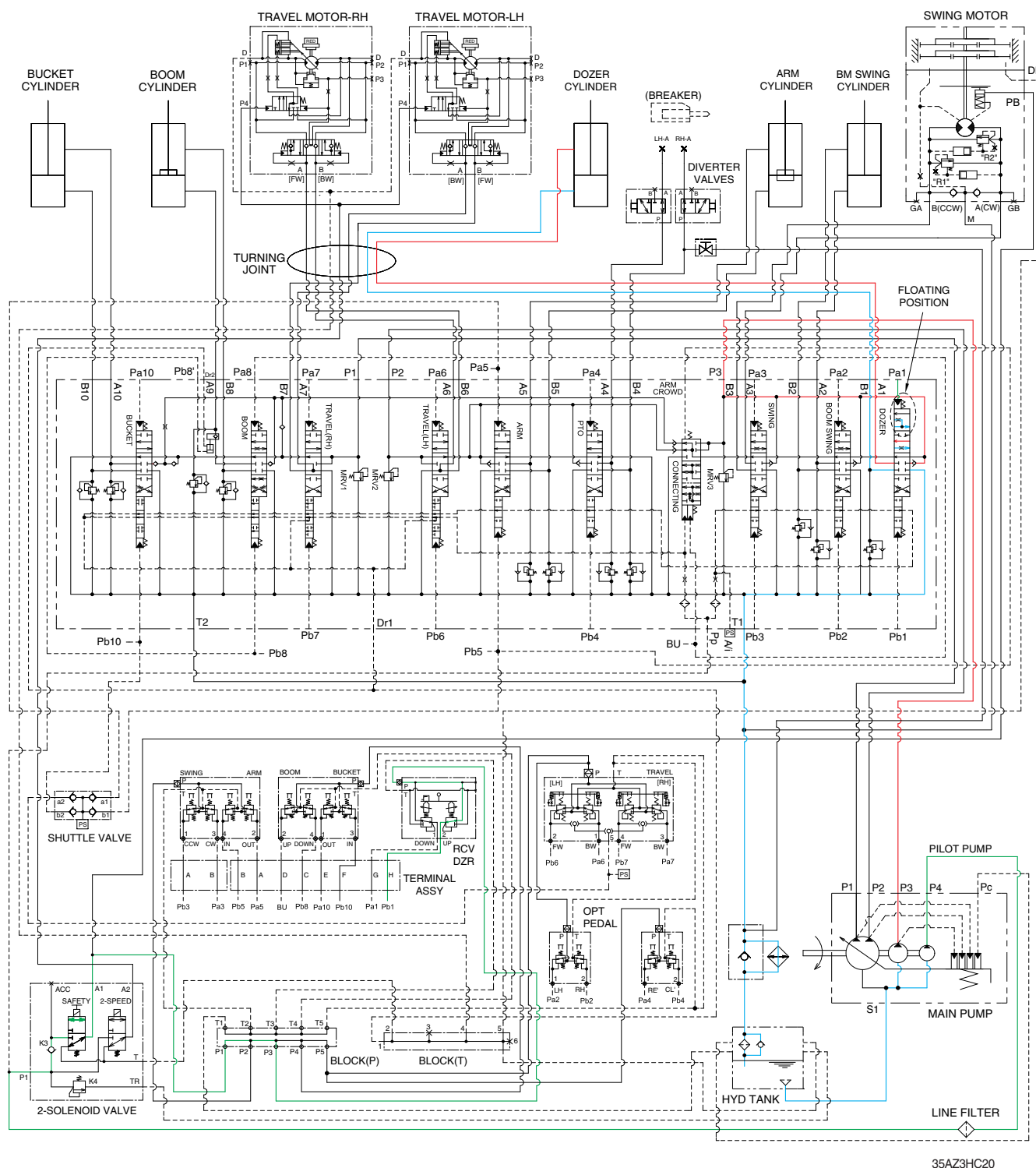
When stopping the motor of slope descending, this valve to prevent the motor over run.

2) SPEED CHANGE MECHANISM (auto)

Auto two speed control mechanism consists of two spools and spring. This valve automatically changes motor displacement in portion to motor pressure

※ The circuit diagram may differ from the equipment, so please check before a repair.

9. DOZER UP OPERATION



35AZ3HC20

When the dozer control lever is pulled back, the dozer spool in the main control valve is moved to the dozer up position by the pilot oil pressure (Pa1) from the remote control valve.

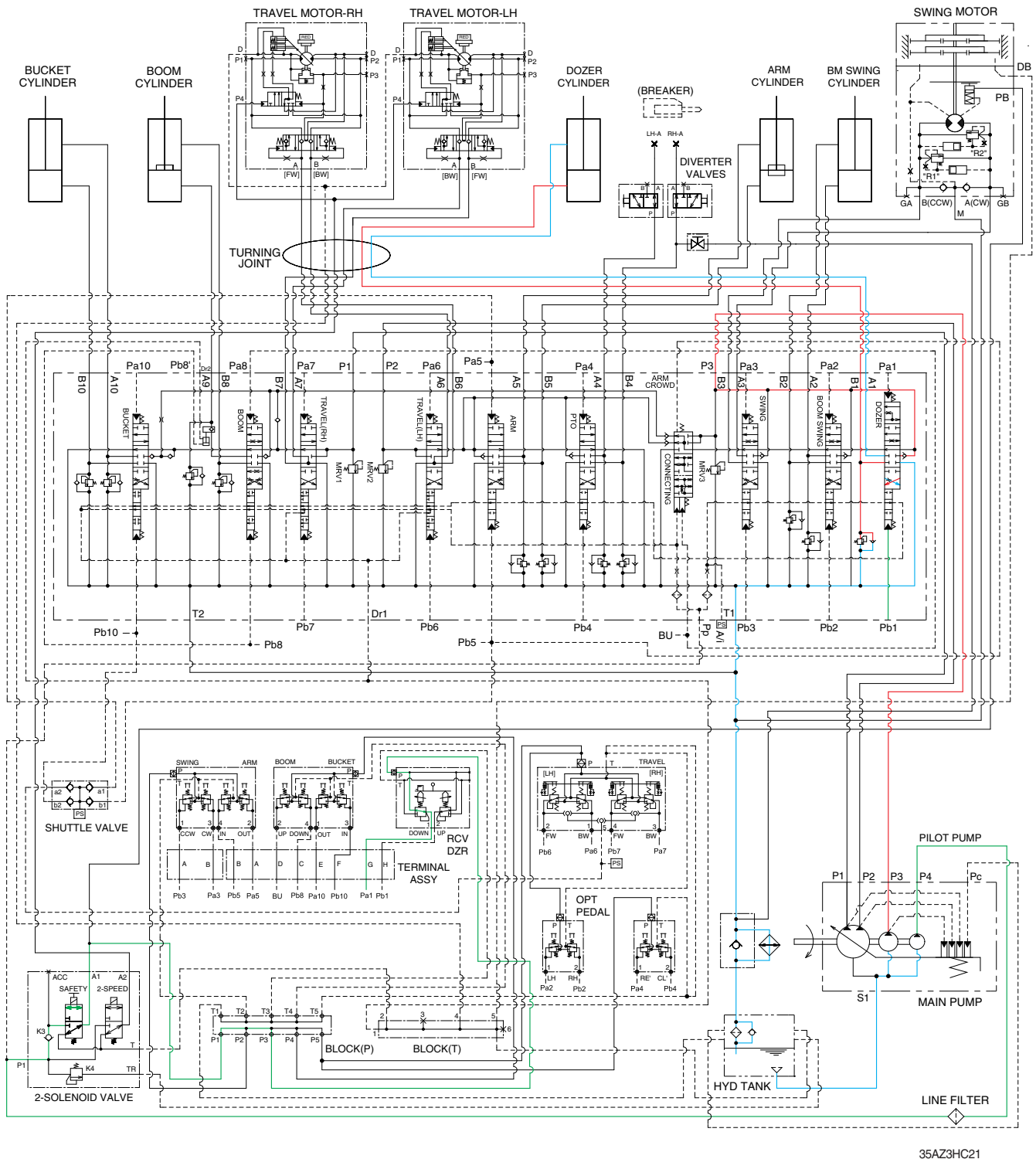
The oil from the P3 pump flows into the main control valve and then goes to the small chamber of dozer cylinder.

At the same time, the oil from the large chamber of dozer cylinder returns to the hydraulic oil tank through the dozer spool in the main control valve. When this happens, the dozer goes up.

Press the dozer floating button and push the dozer lever until the end, the dozer spool is moved to the floating position. Then the hydraulic oil of the rod and head goes to tank, and floating is accomplished. Refer to the operator's manual page 3-33.

※ The circuit diagram may differ from the equipment, so please check before a repair.

10. DOZER DOWN OPERATION



35AZ3HC21

When the dozer control lever is pushed forward, the dozer spool in the main control valve is moved to the dozer down position by the pilot oil pressure (Pb1) from the remote control valve.

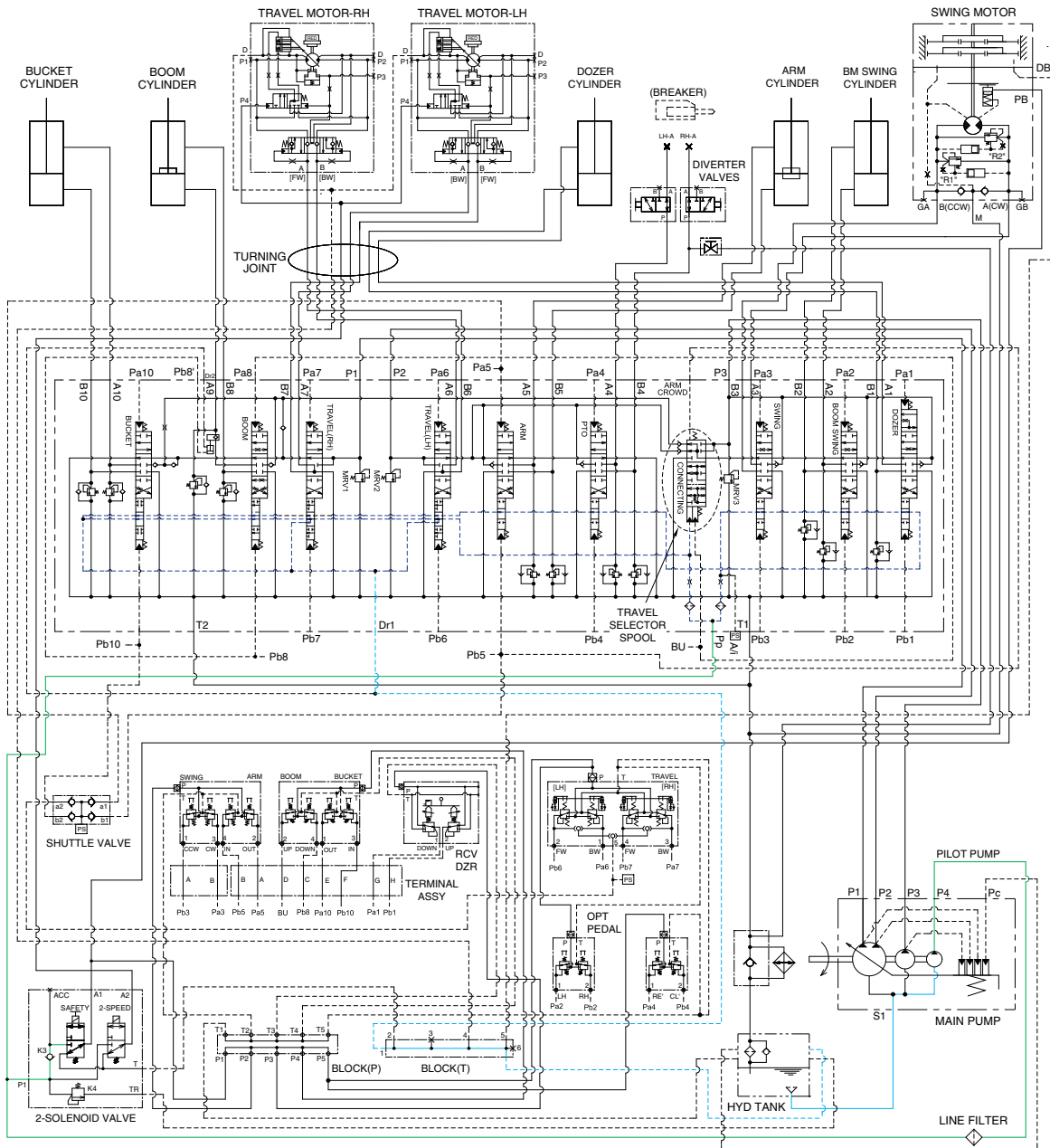
The oil from the P3 pump flows into the main control valve and then goes to the large chamber of dozer cylinder.

At the same time, the oil from the small chamber of dozer cylinder returns to the hydraulic oil tank through the dozer spool in the main control valve. When this happens, the dozer blade is down.

※ The circuit diagram may differ from the equipment, so please check before a repair.

GROUP 5 COMBINED OPERATION

1. OUTLINE



35AZ3HC30

The oil from the P1, P2, P3 pump flows through the neutral oil passage, bypass oil passage and confluence oil passage in the main control valve. Then the oil goes to each actuator and operates them. Check valves and orifices are located on these oil passage in the main control valve. These control the oil from the main pumps so as to correspond to the operation of each actuator and smooth the combined operation.

INDEPENDENT TRAVEL SYSTEM

This independent travel system for straight travel is provided in the main control valve.

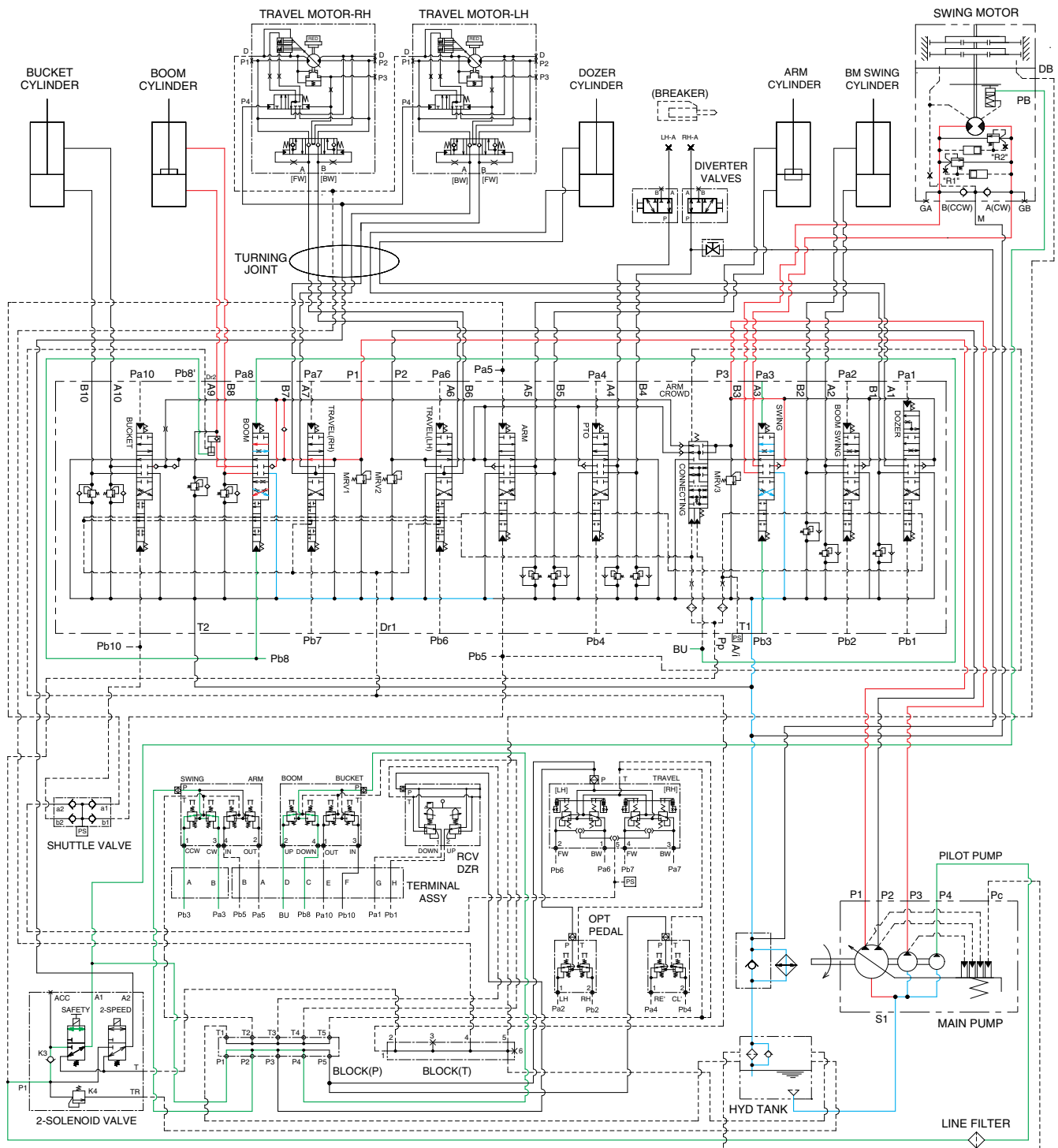
If any actuator(s) on P1 and P2 pump side is operated when traveling, the travel selector spool is moved to the selected side by the pilot oil pressure.

Consequently, the pressure oil from P1 and P2 pump are supplied to the right and left travel motor and oil from P3 pump flows into the other operated actuator.

This keeps the straight travel.

※ The circuit diagram may differ from the equipment, so please check before a repair.

2. COMBINED SWING AND BOOM OPERATION



35AZ3HC31

When the swing and boom functions are operated, simultaneously the swing spool and boom spools in the main control valve are moved to the functional position by the pilot oil pressure (Pa3, Pb3, BU, Pb8) from the remote control valve.

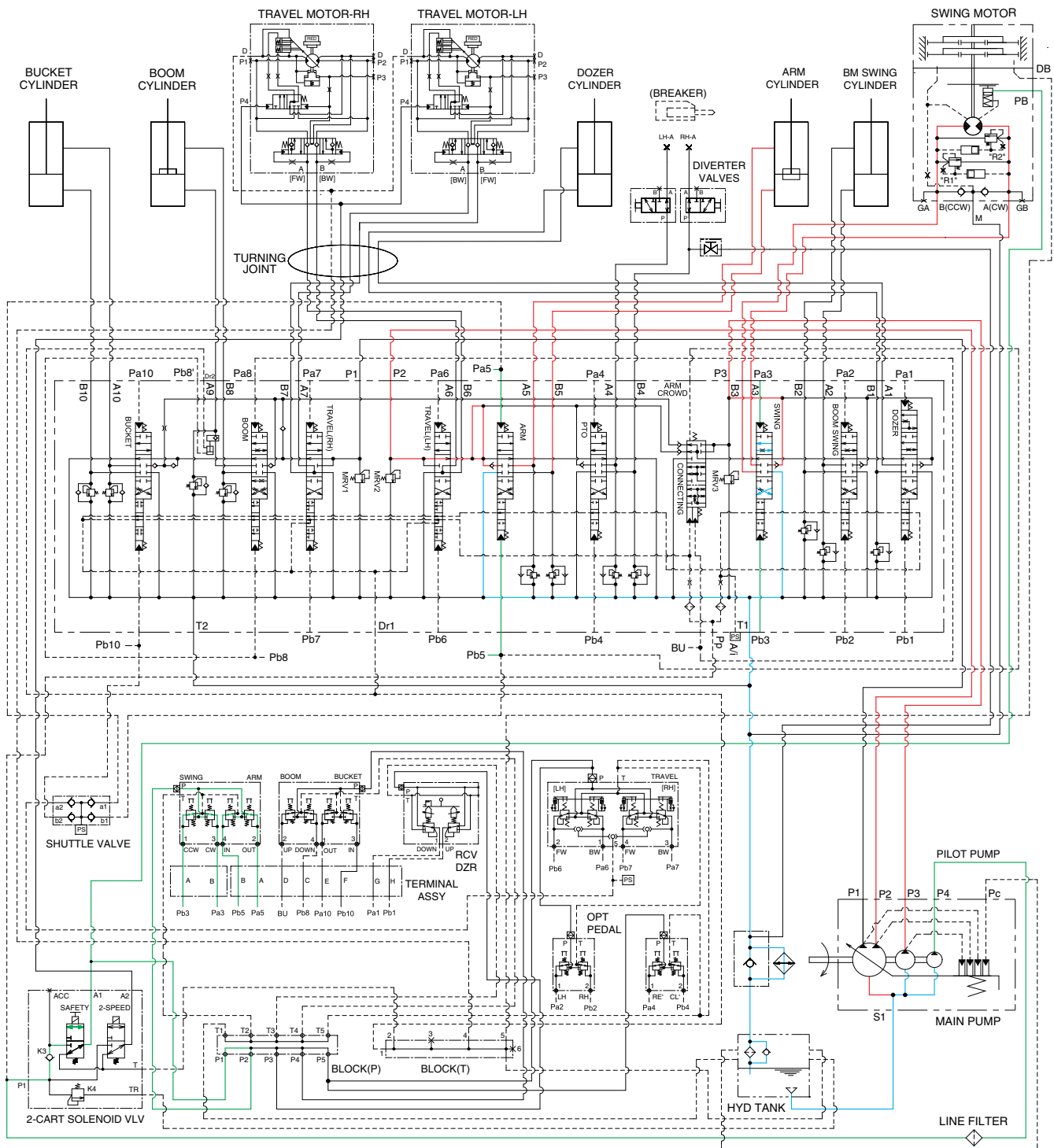
The oil from the P1 pump flows into the boom cylinder through boom.

The oil from the P3 pump flows into the swing motor through the swing spool.

The superstructure swings and the boom is operated.

※ The circuit diagram may differ from the equipment, so please check before a repair.

3. COMBINED SWING AND ARM OPERATION



35AZ3HC32

When the swing and arm functions are operated, simultaneously the swing spool and arm spools in the main control valve are moved to the functional position by the pilot oil pressure (Pa3, Pb3, Pb5, Pa5) from the remote control valve.

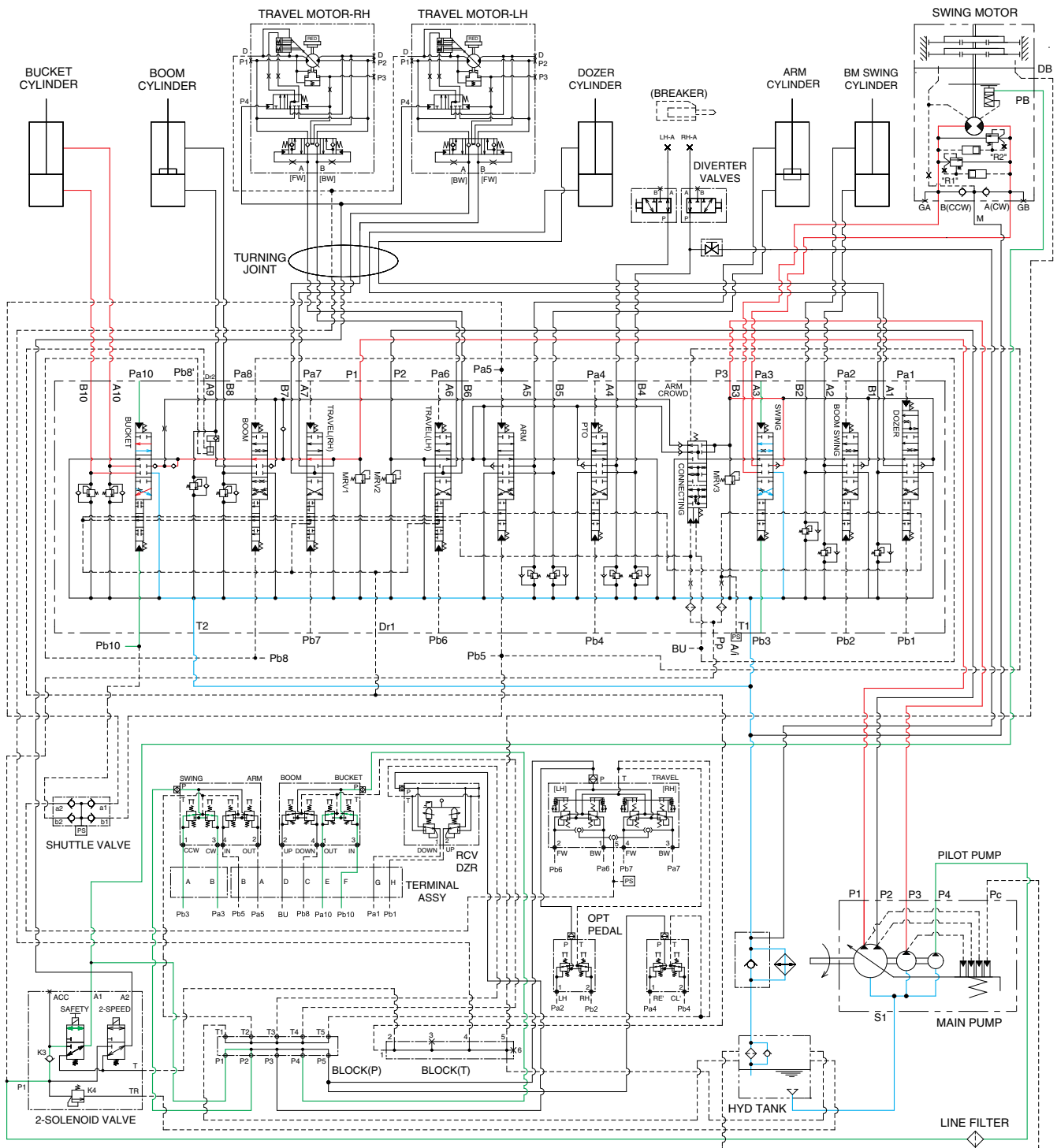
The oil from the P3 pump flows into the swing motor through swing spool.

The oil from the P2 pump flows into the arm cylinder through the arm.

The superstructure swings and the arm is operated.

※ The circuit diagram may differ from the equipment, so please check before a repair.

4. COMBINED SWING AND BUCKET OPERATION



35AZ3HC33

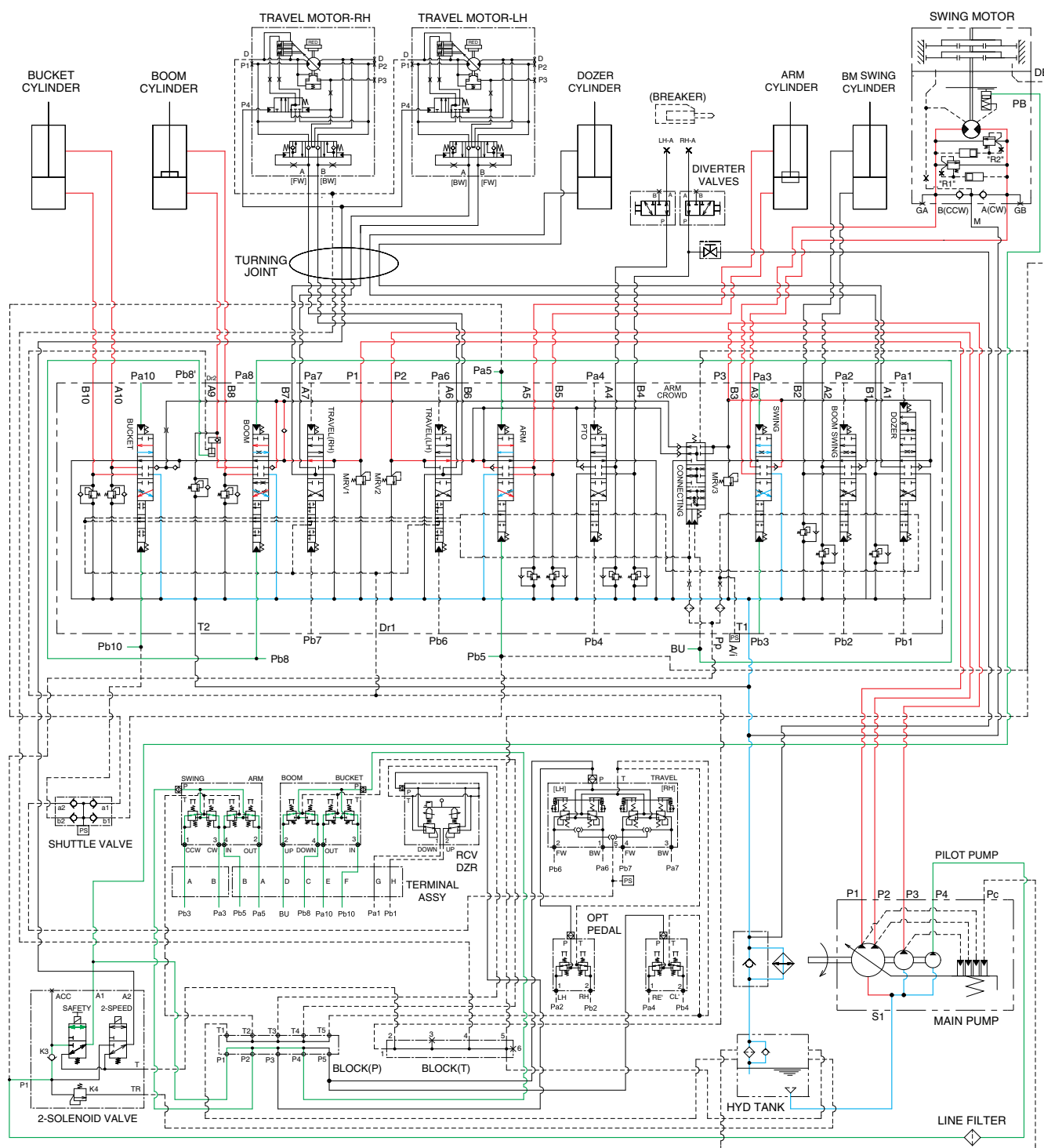
When the swing and bucket functions are operated, simultaneously the swing spool and bucket spool in the main control valve are moved to the functional position by the pilot oil pressure (Pa3, Pb3, Pb10, Pa10) from the remote control valve.

The oil from the P3 pump flows into the swing motor through the swing spool.

The oil from the P1 pump flows into the bucket cylinder through the bucket spool.

※ The circuit diagram may differ from the equipment, so please check before a repair.

5. COMBINED SWING, BOOM, ARM AND BUCKET OPERATION



35AZ3HC34

When the swing, boom, arm and bucket functions are operated, simultaneously each spool in the main control valve is moved to the functional position by the pilot oil pressure (Pa3, Pb3, BU, Pb8, Pb5, Pa5, Pb10, Pa10) from the remote control valve.

The oil from the P2 pump flows into the arm cylinder through, arm spool.

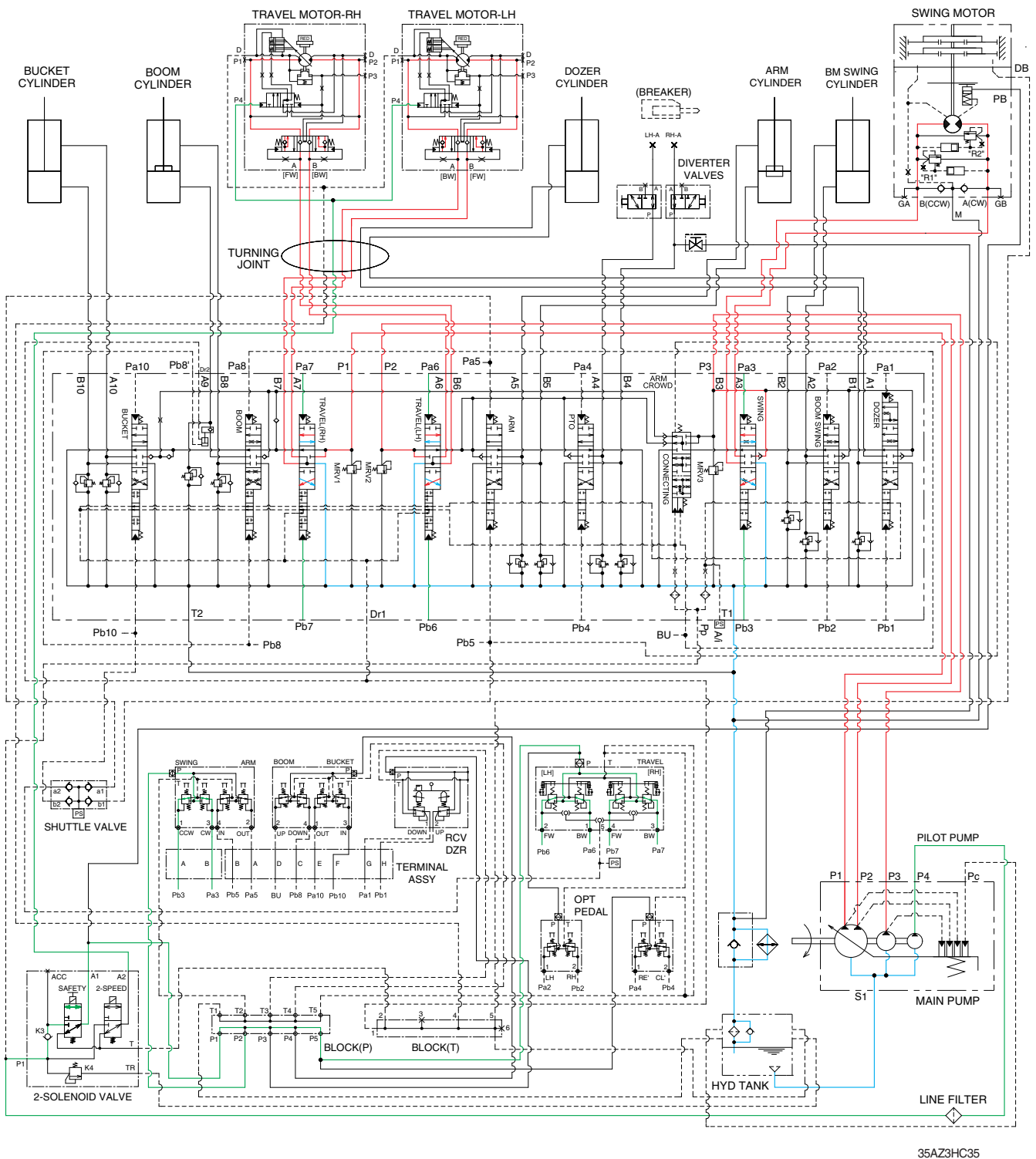
The oil from the P1 pump flows into the boom cylinders and bucket cylinder through the boom spool, bucket spool.

The oil from the P3 pump flows into the swing motor through the swing spool.

The superstructure swings and the boom, arm and bucket are operated.

※ The circuit diagram may differ from the equipment, so please check before a repair.

6. COMBINED SWING AND TRAVEL OPERATION



When the swing and travel functions are operated, simultaneously the swing spool and travel spools in the main control valve are moved to the functional position by the pilot oil pressure (Pa3, Pb3, Pb6, Pb7, Pa6, Pa7) from the remote control valve and the travel levers.

The oil from the P3 pump flows into the swing motor through the swing spool.

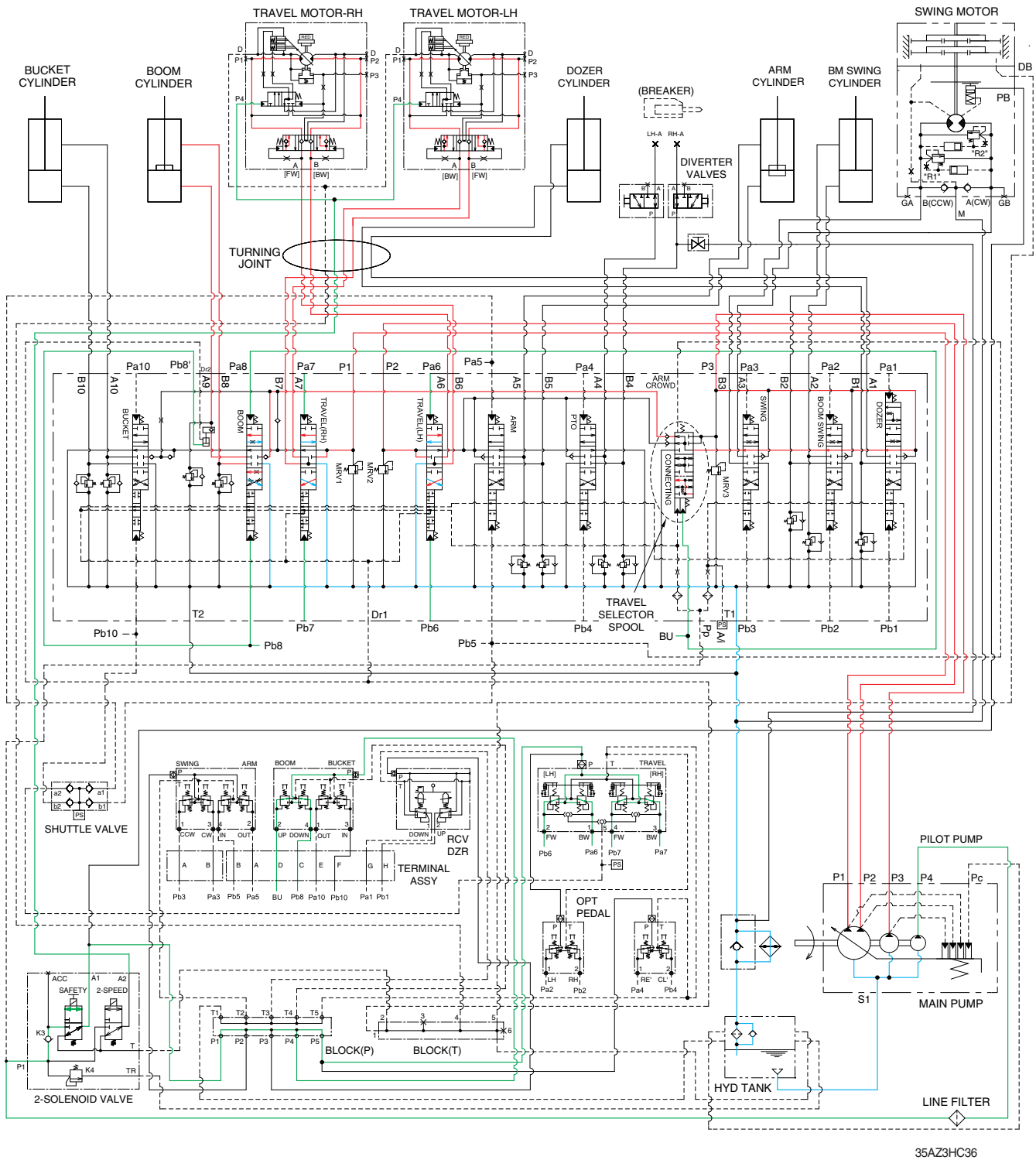
The oil from the P1 pump flows into the travel motor through the RH travel spool.

The oil from the P2 pump flows into the travel motor through the LH travel spool.

The superstructure swings and the machine travels straight.

※ The circuit diagram may differ from the equipment, so please check before a repair.

7. COMBINED BOOM AND TRAVEL OPERATION



35AZ3HC36

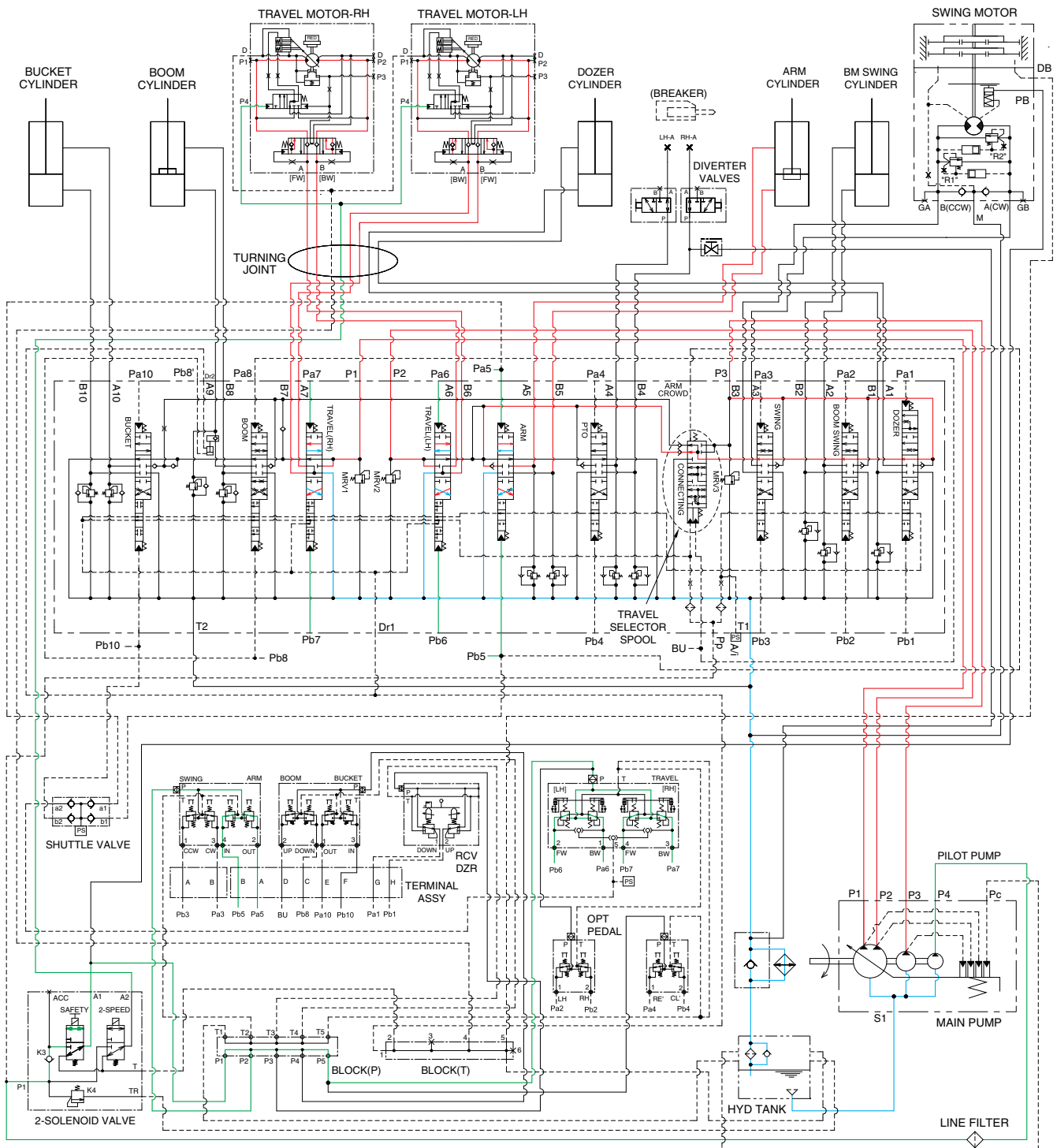
When the boom and travel functions are operated, simultaneously the boom spools and travel spools in the main control valve are moved to the functional position by the pilot oil pressure (PU, Pb8, Pb6, Pb7, Pa6, Pa7) from the remote control valve.

The oil from the P1 and P2 pumps flows into the travel motors through travel RH and travel LH spools.

The oil from the P3 pump flows into the boom cylinders through boom spool via the travel selector spool. The boom is operated and the machine travels straight.

※ The circuit diagram may differ from the equipment, so please check before a repair.

8. COMBINED ARM AND TRAVEL OPERATION



35AZ3HC37

When the arm and travel functions are operated, simultaneously the arm spools and travel spools in the main control valve are moved to the functional position by the pilot oil pressure (Pb5, Pa5, Pb6, Pb7, Pa6, Pa7) from the remote control valve.

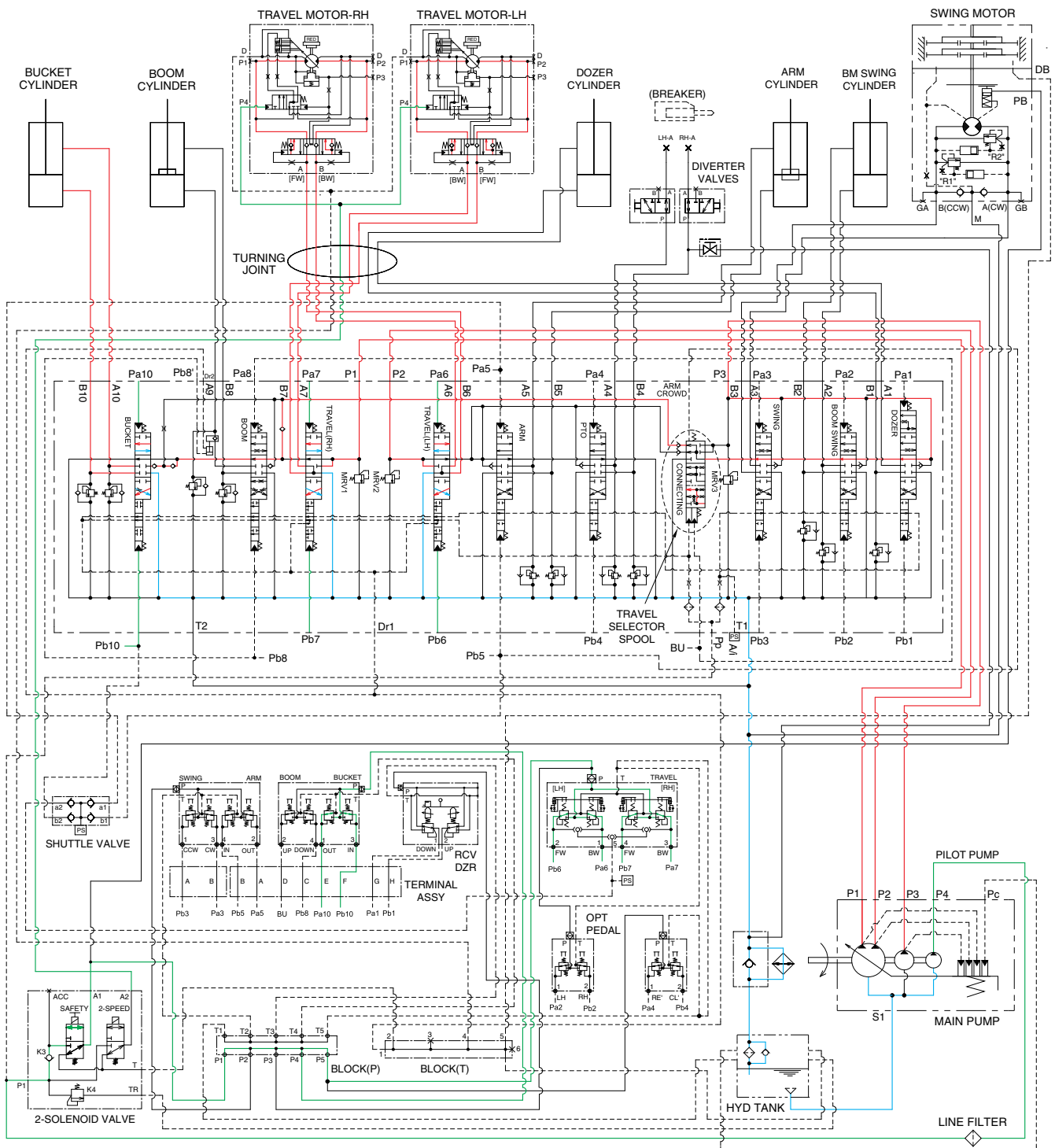
The oil from the P1 and P2 pumps flows into the travel motors through travel spools.

The oil from the P3 pump flows into the arm cylinder through arm spool via the travel selector spool.

The arm is operated and the machine travels straight.

※ The circuit diagram may differ from the equipment, so please check before a repair.

9. COMBINED BUCKET AND TRAVEL OPERATION



35AZ3HC38

When the bucket and travel functions are operated, simultaneously the bucket spool and travel spools in the main control valve are moved to the functional position by the pilot oil pressure (Pb10, Pa10, Pb6, Pb7, Pa6, Pa7) from the remote control valve, and the travel selector spool is pushed to the up by the oil pressure from pilot pump. The oil from the P1 and P2 pumps flows into the travel motors.

The oil from the P3 pump flows into the bucket cylinder through bucket spool via the travel selector spool.

The bucket is operated and the machine travels straight.

※ The circuit diagram may differ from the equipment, so please check before a repair.